

道路(工程、使用及補償)條例(第370章)
ROADS (WORKS, USE AND COMPENSATION) ORDINANCE (CHAPTER 370)

工務計劃項目第B810CL號
元朗朗邊公營房屋發展之工地平整
及基礎設施工程
道路工程

ROAD WORKS UNDER PWP ITEM NO. B810CL
SITE FORMATION AND INFRASTRUCTURE WORKS
FOR PUBLIC HOUSING DEVELOPMENTS AT
LONG BIN, YUEN LONG

圖則編號
PLAN NO.

頁次
SHEET NO.

圖則名稱
PLAN TITLE

261044/GZ/001

二張之第一張
SHEET 1 OF 2

261044/GZ/002


二張之第二張
SHEET 2 OF 2

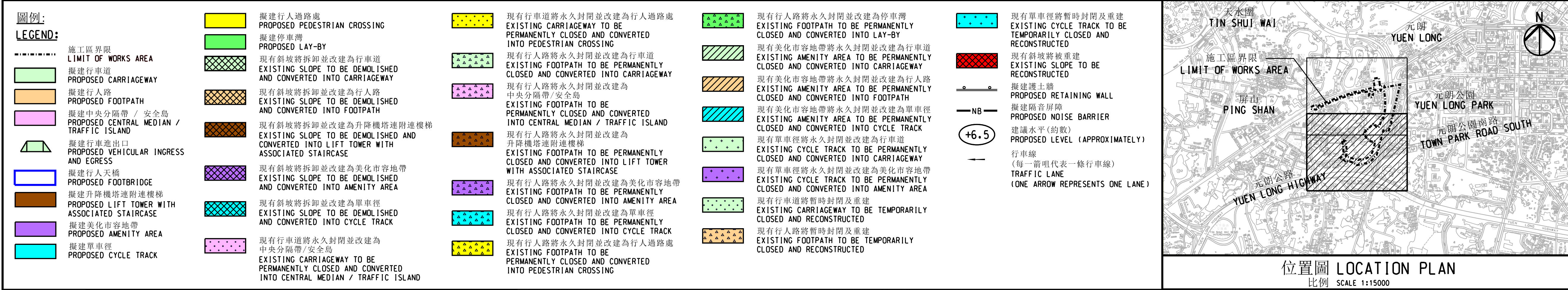
根據<<道路(工程、使用及補償)條例>>
(第370章)而在憲報公布之圖則
PLAN FOR GAZETTING UNDER ROADS
(WORKS, USE AND COMPENSATION)
ORDINANCE (CHAPTER 370)

批簽 ENDORSED BY		
	Original Signed	
黎以德	JOSEPH Y T LAI	16 DEC 2019
運輸及房屋局常任秘書長(運輸) PERMANENT SECRETARY FOR TRANSPORT AND HOUSING (TRANSPORT)		日期 DATE

批准 APPROVED BY		
陳偉杰	THOMAS W K CHAN	11 DEC 2019
總工程師/房屋工程2 CHIEF ENGINEER / HOUSING PROJECTS 2 CIVIL ENGINEERING AND DEVELOPMENT DEPARTMENT		日期 DATE

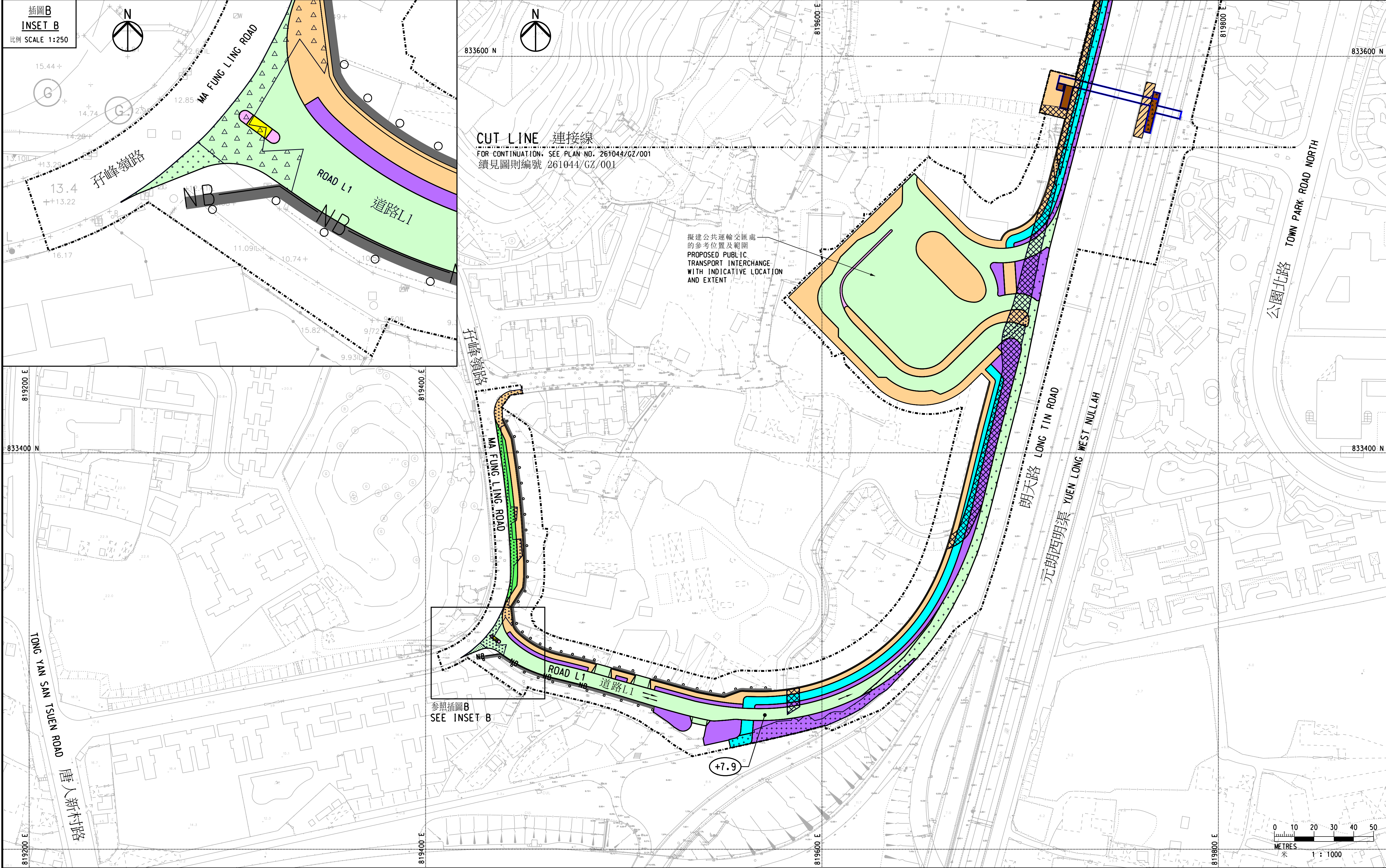
版權所有 不得翻印
COPYRIGHT RESERVED

	土木工程拓展署 土木工程處 房屋工程2部 CIVIL ENGINEERING AND DEVELOPMENT DEPARTMENT CIVIL ENGINEERING OFFICE HOUSING PROJECTS 2 DIVISION
---	---



註釋:
NOTES:

- 除在其他方面指定外,所有量度以米為單位。
ALL DIMENSIONS ARE IN METRES UNLESS OTHERWISE STATED.
- 所有水平均為約數,以米為單位,並在香港主水平基準上。
ALL LEVELS ARE APPROXIMATE VALUES AND IN METRES ABOVE HONG KONG PRINCIPAL DATUM.
- 如有需要,施工區界限內部分現有行車道、行人路、中央分隔帶/安全島、美化市容地帶和單車徑或會分階段暫時封閉。
SECTIONS OF THE EXISTING CARRIAGEWAYS, FOOTPATHS, CENTRAL MEDIANS/TRAFFIC ISLANDS, AMENITY AREAS AND CYCLE TRACKS WITHIN THE LIMIT OF WORKS AREA MAY BE TEMPORARILY CLOSED IN PHASES AS AND WHEN REQUIRED.



工程名稱 PROJECT TITLE
工務計劃項目第B810CL號
元朗朗邊公營房屋發展之工地平整及基礎設施工程
道路工程
ROAD WORKS UNDER PWP ITEM NO.B810CL
SITE FORMATION AND INFRASTRUCTURE WORKS FOR PUBLIC HOUSING DEVELOPMENTS AT LONG BIN, YUEN LONG

圖則名稱 PLAN TITLE
根據《道路(工程、使用及補償)條例》(第370章)而在憲報公布的圖則(二張之第二張)
PLAN FOR GAZETTING UNDER ROADS (WORKS, USE AND COMPENSATION) ORDINANCE (CHAPTER 370) (SHEET 2 OF 2)

圖則編號 PLAN NO.

261044/GZ/002

比例 SCALE

1:1000

版權所有 COPYRIGHT RESERVED

辦事處 OFFICE
房屋工程2部
HOUSING PROJECTS 2 DIVISION
土木工程處
CIVIL ENGINEERING OFFICE

土木工程拓展署
CIVIL ENGINEERING AND DEVELOPMENT DEPARTMENT