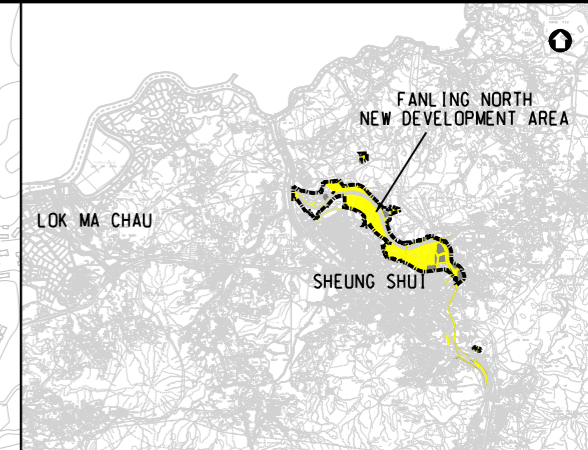
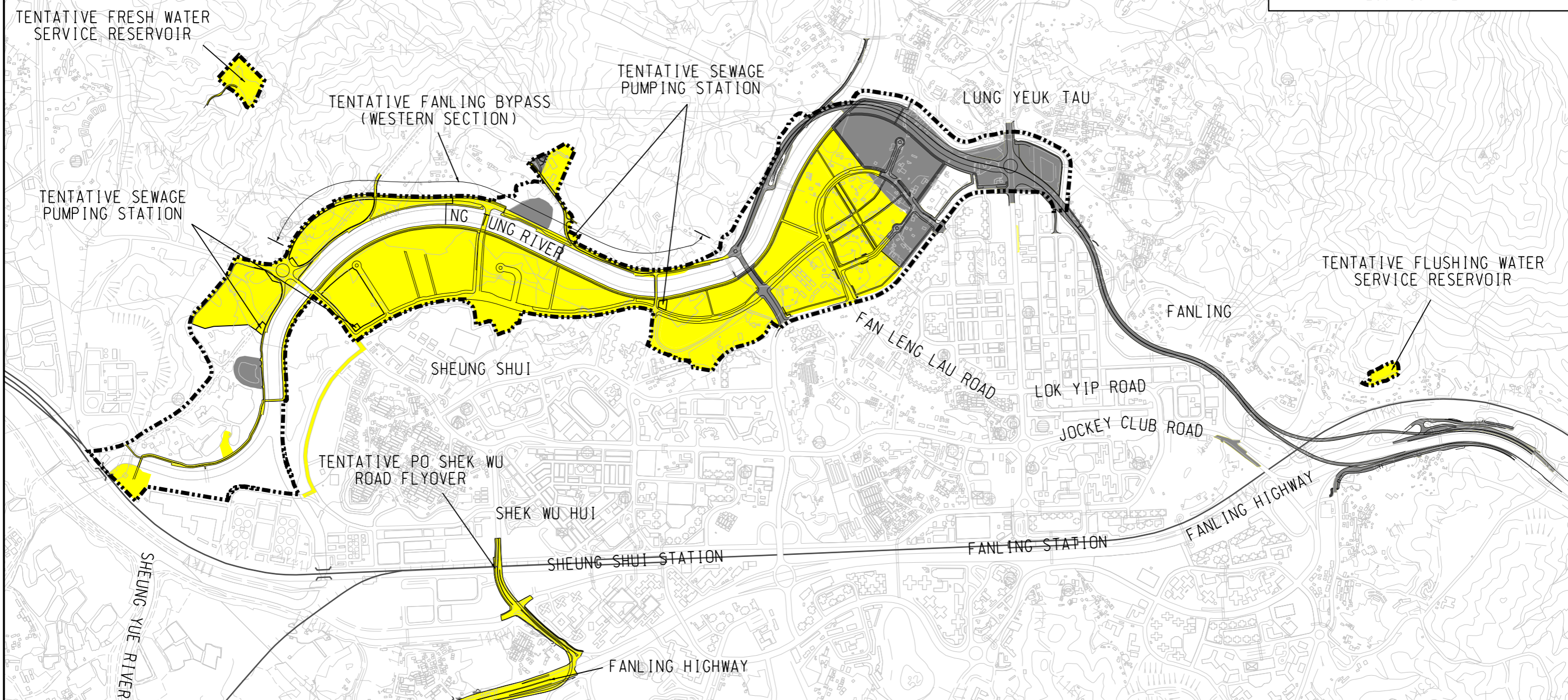


LEGEND:

- BOUNDARY OF FANLING NORTH NEW DEVELOPMENT AREA
- PWP ITEM NO. 828CL - REMAINING PHASE OF SITE FORMATION AND ENGINEERING INFRASTRUCTURE WORKS AT KWU TUNG NORTH NEW DEVELOPMENT AREA AND FANLING NORTH NEW DEVELOPMENT AREA (REMAINING PHASE WORKS)
- PWP ITEM NOS. 747CL & 759CL - ADVANCE WORKS AND FIRST STAGE WORKS FOR DEVELOPMENT AT KWU TUNG NORTH NEW DEVELOPMENT AREA AND FANLING NORTH NEW DEVELOPMENT AREA (FIRST PHASE WORKS)



LOCATION PLAN



圖則名稱 drawing title PHASING OF THE DEVELOPMENT OF KWU TUNG NORTH AND FANLING NORTH NEW DEVELOPMENT AREAS - LAYOUT PLAN (FANLING NORTH NEW DEVELOPMENT AREA)	繪圖 drawn	簽署 initial	日期 date	項目編號 item no.	辦事處 office 北拓展處 NORTH DEVELOPMENT OFFICE 土木工程拓展署 CIVIL ENGINEERING AND DEVELOPMENT DEPARTMENT
	W K LAU		04.04.19		
	核對 checked	簽署 initial	日期 date	比例 scale	
P Y MAK		04.04.19	1:15 000 (A3)		
核准 approved	簽署 initial	日期 date	圖則編號 drawing no.		
F O HO		04.04.19	CDNKFNZ0118		