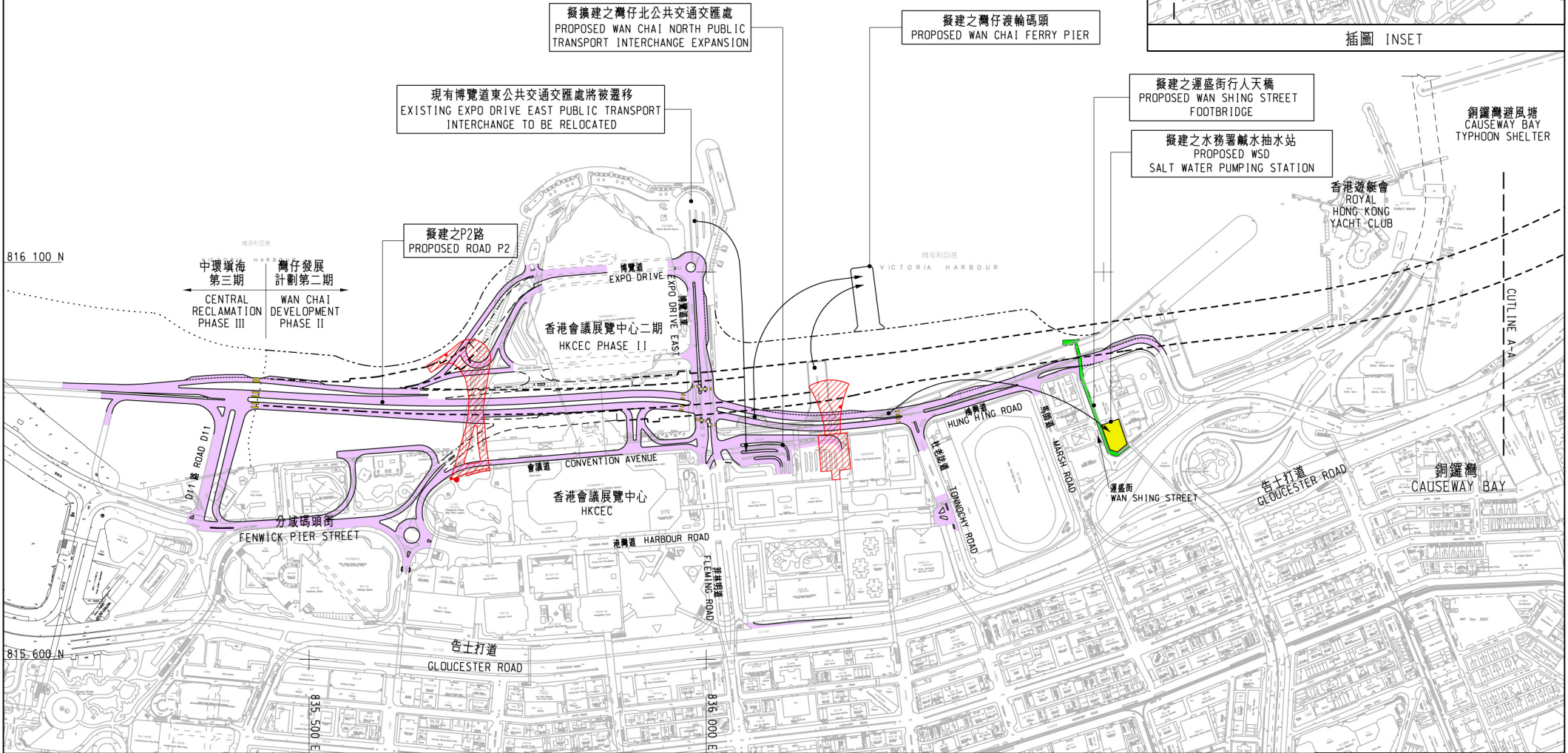
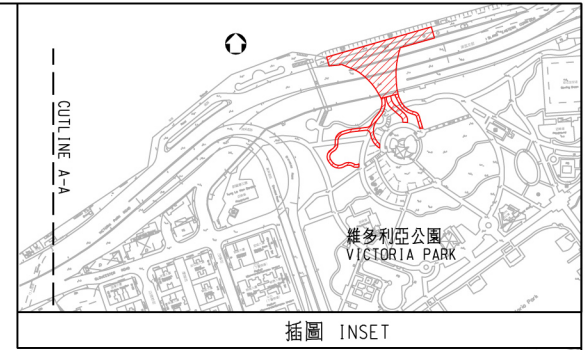


圖例 LEGEND:

- 擬建之地面道路工程
PROPOSED ROAD WORKS AT GROUND LEVEL
- 擬建之中環灣仔繞道 (不包括在本工程計劃之內)
PROPOSED CENTRAL-WAN CHAI BYPASS (NOT UNDER THIS PROJECT)
- 擬建之行人圍景平台
PROPOSED PEDESTRIAN LANDSCAPED DECK
- 擬建之地面行人通道
PROPOSED AT-GRADE CROSSING

維多利亞港
VICTORIA HARBOUR



<p>圖則名稱 drawing title</p> <p>灣仔發展計劃第二期工程 (道路及地上設施) WAN CHAI DEVELOPMENT PHASE II - ENGINEERING WORKS (ROADS AND ABOVE-GROUND FACILITIES)</p>	繪圖 drawn	簽署 initial	日期 date	項目編號 item no.	<p>辦事處 office</p> <p>港島及離島拓展處 HONG KONG ISLAND AND ISLANDS DEVELOPMENT OFFICE</p> <p>土木工程拓展署 CIVIL ENGINEERING AND DEVELOPMENT DEPARTMENT</p>
	Y W Yip		30/01/08	7677CL	
	核對 checked	簽署 initial	日期 date	比例 scale	
K F Pong		17/04/09	1:5000	圖則編號 drawing no.	
核准 approved	簽署 initial	日期 date	圖則編號 drawing no.	HK I-21396	