

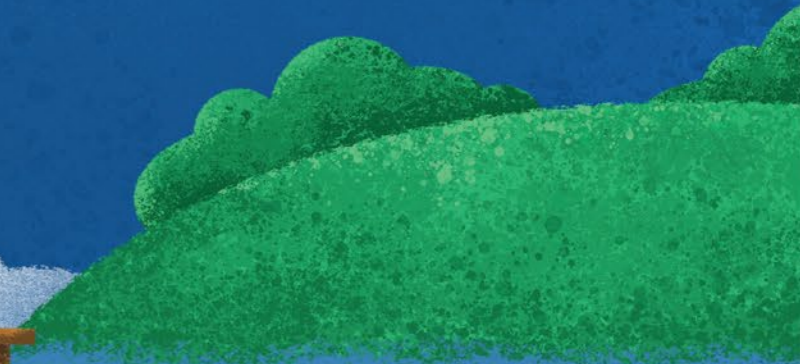
TEN TREASURE TROVES



TEN TREASURE TROVES

Written by Public Relations Unit, CEDD

Illustrated by Kiki Cheng





JACK
Hog the Pirate Captain

Let me see -
who's that?
What's he doing?

Why is he here
at this hour?



ARIEL
Mrs Pirate Captain

It's suspicious.
Maybe he's a pirate
like us.



JIMMY
Captain Junior



JOLLY
Captain Junior

Daddy, take a look!
Something dropped
on the ground.

Furries, go get it!
Quick!



FURRIES
Pirate Sailors

Aye, aye,
Captain!



TEAM UP THE PIRATES!

Let's split into four squads.
Go search for the treasures
and then assemble on
Lamma Island!



Solve the Sudoku below and group the three pirate characters
with the same number into one squad.

1	Yellow Furry I, Pirate Sailor	Jack, Hog the Pirate Captain	Aniel, Mrs Pirate Captain
Blue Furry I, Pirate Sailor	Red Furry I, Pirate Sailor	Jimmy, Captain Junior	3
Jolly, Captain Junior	4	2	Orange Furry I, Pirate Sailor
Red Furry II, Pirate Sailor	Orange Furry II, Pirate Sailor	Yellow Furry II, Pirate Sailor	Blue Furry II, Pirate Sailor

- | | | | |
|--|--|--|--|
|  1. _____ |  1. _____ |  1. _____ |  1. _____ |
| 2. _____ | 2. _____ | 2. _____ | 2. _____ |
| Squad 1 3. _____ | Squad 2 3. _____ | Squad 3 3. _____ | Squad 4 3. _____ |

Answers can be found on the inner back cover.

LEUNG SHUEN WAN

Every two years, Leung Shuen Wan celebrates Tin Hau (Empress of Heaven) Festival, which is on the 23rd day of the Third Lunar Month.



Let's start the treasure hunt!

Find the following characters/objects:



Pirate x 3



Conical hat x 10



Yellow stool x 1



Hidden character x 1

LAI CHI WO

The historic Hakka walled village in Lai Chi Wo was built over 300 years ago. The Fung Shui wood behind the village possesses many precious native trees.



Find the following characters/objects:

			
Pirate x 3	Cha Kwo x 17 (steamed sticky rice dumpling)	Hollow tree x 1	Hidden character x 1

Answers can be found on the inner back cover

YI O

There is a large paddy field in Yi O.



SHAM CHUNG

Sham Chung is famous for its endless grass field.



Find the 8 hidden character's paw prints in the illustration:
Answers can be found on the inner back cover



KAU SAI VILLAGE

Kau Sai Village celebrates Hung Shing (God of Sea) Festival which is on the 13th day of the Second Lunar Month.



Find the following characters/objects:



Pirate x 3



People taking photos x 10



Bunting flag x 8



Hidden character x 1

TUNG PING CHAU

Tung Ping Chau is renowned for its unique geological landscape, the home of the youngest sedimentary rock in Hong Kong.



Find the 8 hidden character's paw prints in the illustration:

Answers can be found on the inner back cover



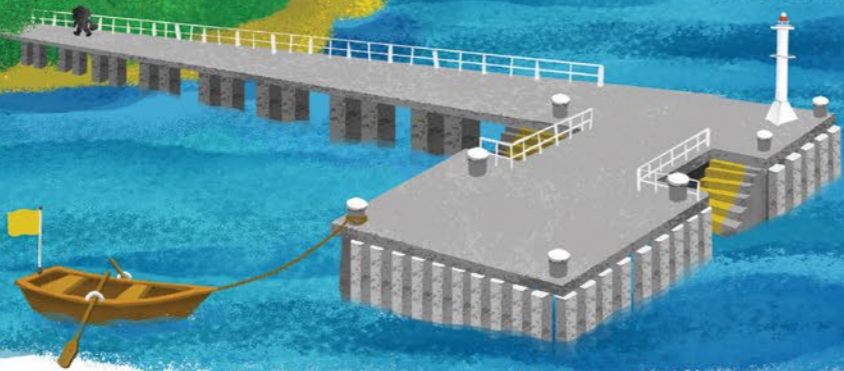
SHEK TSAI WAN

Shek Tsai Wan provides the picturesque scenery of a fishing village in Ma Wan.



LAI CHI CHONG

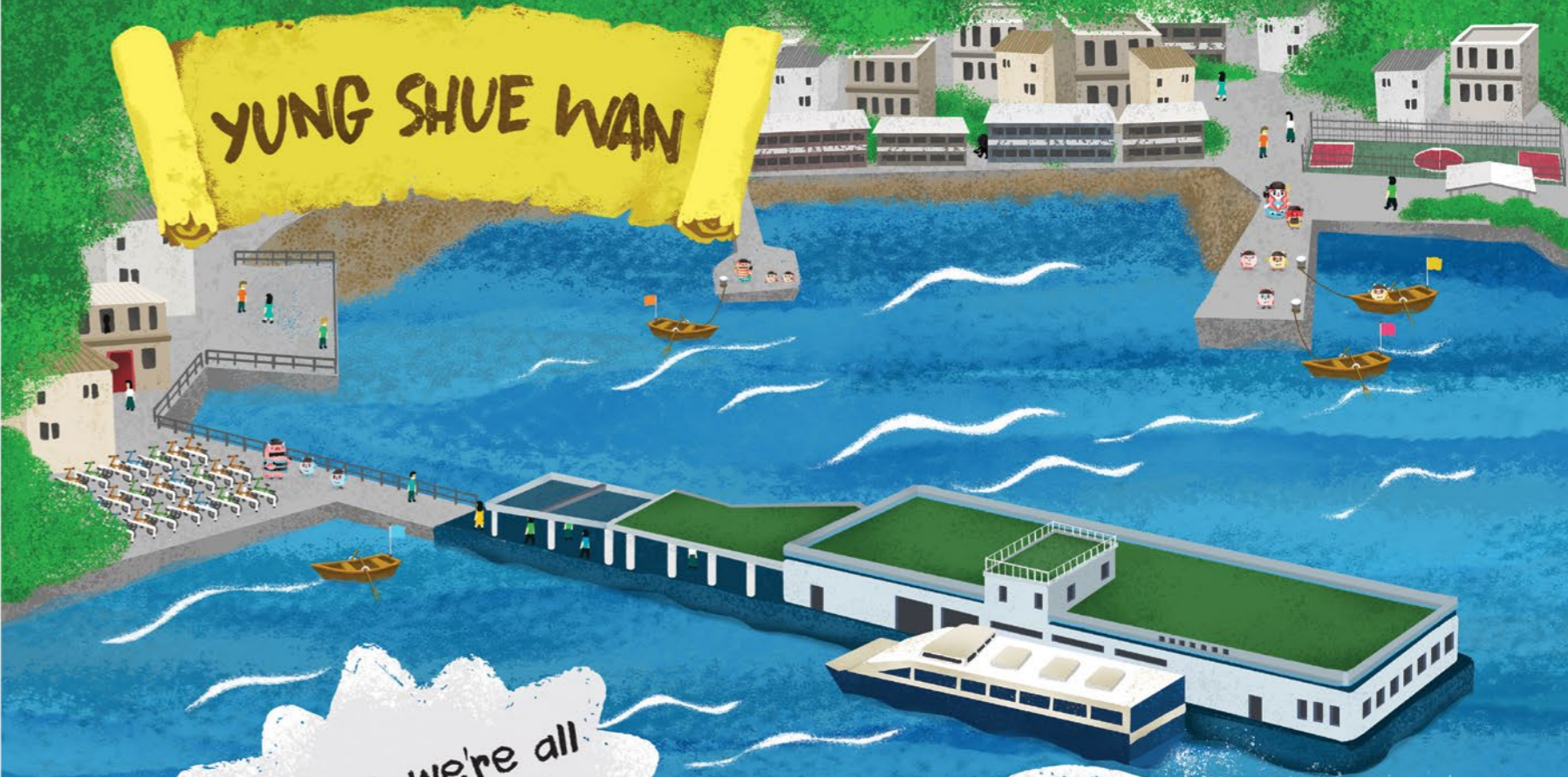
Lai Chi Chong possesses the geological landscape of volcanoclastic sedimentary rock strata.



Find the fossils of the following animal in the illustration:
Answers can be found on the inner back cover

 Paralycoptera x 5
(a Jurassic-aged fish)

YUNG SHUE WAN



Buddies, we're all finally here!

But, we haven't found any treasures yet...

Yung Shue Wan Main Street
榕樹灣大街

I'm exhausted...

Don't worry. There's still one location of treasure trove that we haven't been to.

PAK KOK VILLAGE

Pak Kok Village is located at the northern coast of Lamma Island.



The pirates finally made their way to Pak Kok Village, the last location on the treasure map. However, there were still no treasures in sight.

It's raining!

Let's take shelter first!



The pirates squeezed themselves into the rain shelter next to the Pak Kok Pier while a mysterious figure emerged behind them...

Stop pushing!





Why do you, also, have this map?



We're... not... hunting treasures...

Oh no, we're busted!



This is Pak Kok Pier. What treasures are you hunting?

Um, the weather is pretty nice today.

But, it's raining right now.



*"Ir" pronounced as "engineer" is the abbreviation for the prefix of Corporate Members of the Hong Kong Institution of Engineers.

IMPROVEMENT WORKS FOR PAK KOK PIER

Engineering Fun Fact

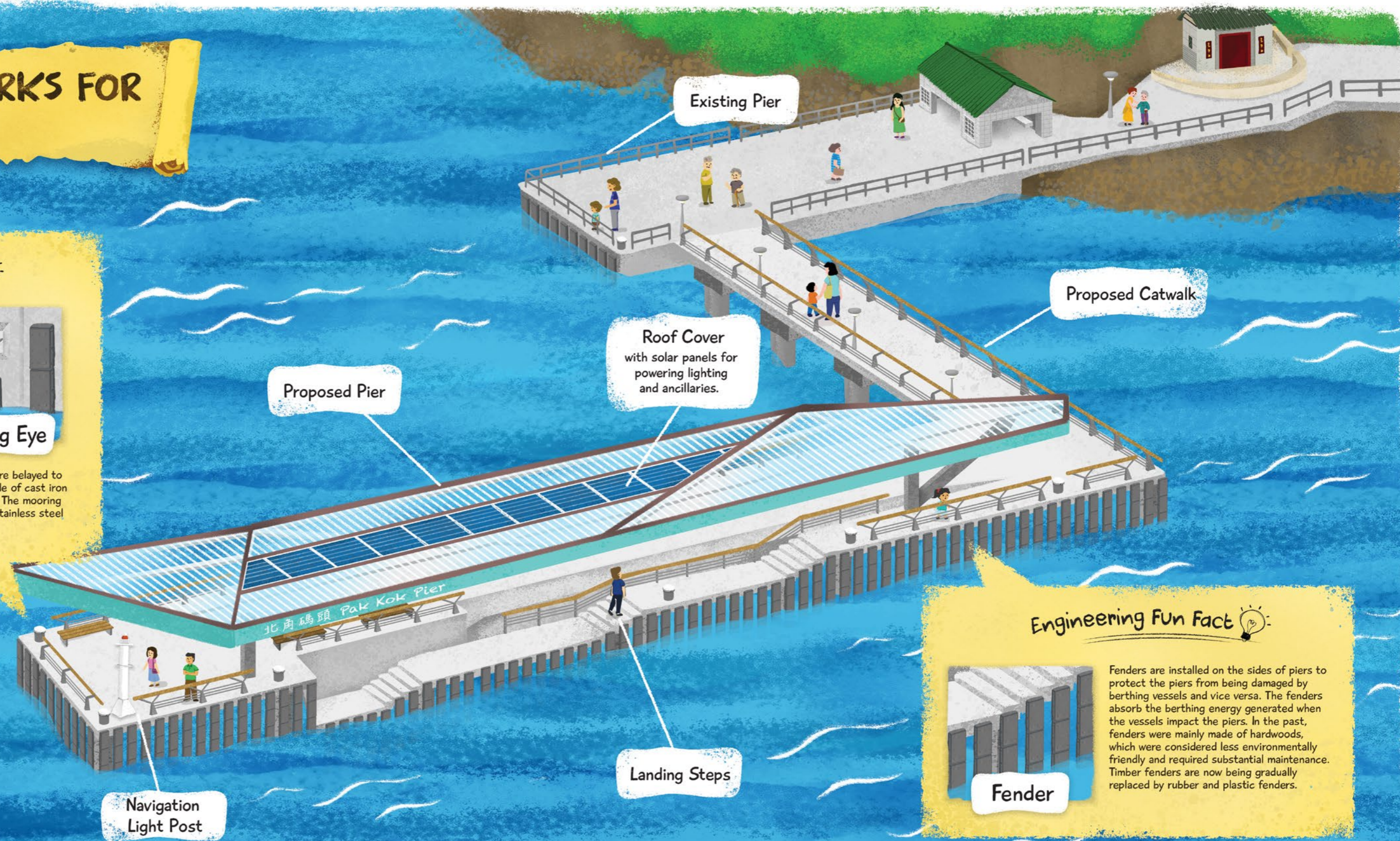


Bollard

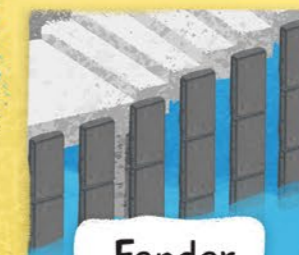


Mooring Eye

When a large vessel is moored to a pier, its mooring lines are belayed to bollards to refrain the vessel from moving. Bollards are made of cast iron or stainless steel collars infilled with reinforced concrete. The mooring lines of a small vessel may alternatively be secured at the stainless steel mooring eyes located on the sides of a pier.



Engineering Fun Fact



Fender

Fenders are installed on the sides of piers to protect the piers from being damaged by berthing vessels and vice versa. The fenders absorb the berthing energy generated when the vessels impact the piers. In the past, fenders were mainly made of hardwoods, which were considered less environmentally friendly and required substantial maintenance. Timber fenders are now being gradually replaced by rubber and plastic fenders.



More about Pier Improvement Programme

At present, there are more than 100 public piers in Hong Kong which are built, maintained and managed by the Government. Whilst the Government has been carrying out regular inspections and maintenance on the public piers, the condition of some piers at remote areas is unable to satisfy current needs after being used for years, such as:

- Unsatisfactory boarding condition of small or primitive piers leading to potential safety concerns to passengers, especially for kids and elderly;
- Inadequate water depth for larger vessels to berth especially during low tide;
- Limited berthing space or narrow accesses which cannot cope with the high utilisation rate during festive times or weekends; and
- Aged pier structures pending reconstruction.

The Pier Improvement Programme (PIP) was featured in the 2017 Policy Address to upgrade the structural and facility standard of existing public piers at remote rural areas in phases, to enhance the accessibility of some scenic and natural heritage attractions, and meet the needs of local villagers relying on boats as their main transport mode or fishermen's operation.

The Government will incorporate barrier-free facilities such as floating pontoons on the

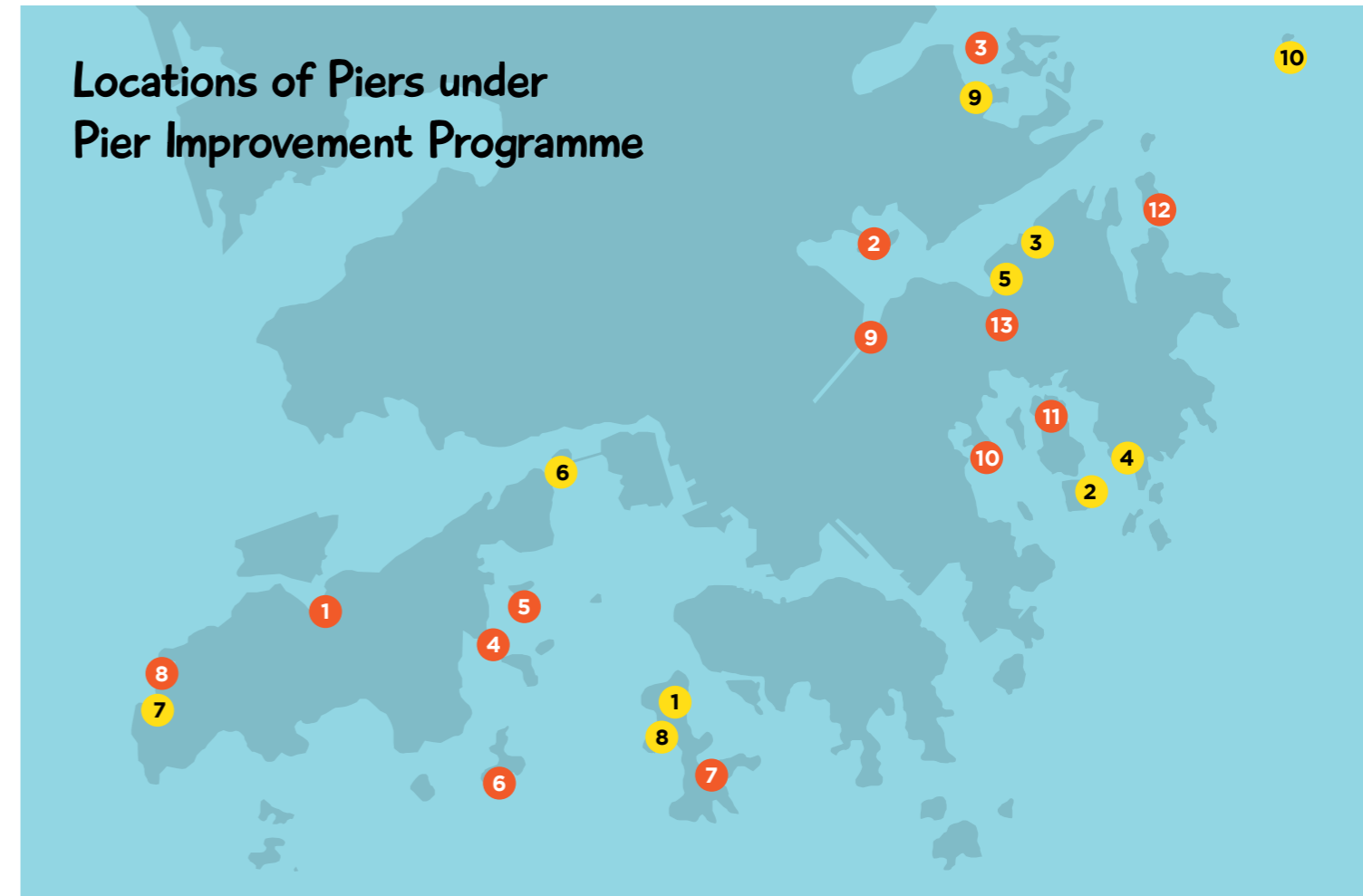
piers where appropriate, to ensure users with different needs can travel on vessels safely.

Phase 1 of the PIP covers 10 public pier projects. The first project, Reconstruction of Pak Kok Pier on Lamma Island, began in 2020, and the works of the remaining 9 projects will gradually begin afterwards.

Because the public generally welcome and support the PIP, the Government is launching Phase 2 of the programme to further enhance another 13 public piers. It will roll out the enhancement projects one by one as soon as they are ready, so that they can benefit more people. The Government will also consider the actual circumstances and improve other public piers at suitable timing.

Pier Safety Tips

1. Do not embark or disembark until the vessel is completely berthed.
2. Use safe accesses to embark and disembark. Beware of vessel movement. Take particular care of elderly and children.
3. Do not climb over pier railings.
4. Beware of slippery floors.
5. Be considerate and keep the pier clean.



Phase 1

1	Pak Kok Pier	6	Shek Tsai Wan Pier
2	Kau Sai Village Pier	7	Yi O Pier
3	Lai Chi Chong Pier	8	Yung Shue Wan Public Pier
4	Leung Shuen Wan Pier	9	Lai Chi Wo Pier
5	Sham Chung Pier	10	Tung Ping Chau Public Pier

Phase 2

1	Ma Wan Chung Pier	8	Tai O Public Pier
2	Sam Mun Tsai Village Pier	9	Ma Liu Shui Ferry Pier
3	Ap Chau Public Pier	10	Ma Nam Wat Pier
4	Man Kok Tsui Pier	11	Yim Tin Tsai Pier
5	Peng Chau Public Pier	12	Tap Mun Pier
6	Sai Wan Jetty, Cheung Chau	13	Yung Shue O
7	Sok Kwu Wan Pier No.2		

Please scan this QR code to find out more about the Pier Improvement Programme:





~The End~



All rights are reserved by the Government of the Hong Kong Special Administrative Region.
No part of this publication may be reproduced in whole or in part without prior permission of the publisher.

Edition:
First edition, September 2022
Preview edition, March 2022

Published by
Public Relations Unit,
Civil Engineering and
Development Department

Address:
1/F, Civil Engineering and Development Building,
101 Princess Margaret Road, Homantin,
Kowloon, Hong Kong

Get answers:
Please scan this QR code to check the
answers of the games in this book.



Hog the Pirate Captain and his crew embarked on an exotic treasure hunt after discovering a mysterious treasure map. After searching ten remote places of Hong Kong, they finally met the map owner and uncovered the secrets behind the ten treasure troves shown on the map...

About the Characters



About the Illustrator

Kiki Cheng, the creator and intellectual property owner of the Pirate Family characters in this book, is an illustrator and graphic designer with extensive experience in art education and design. She received the Gold Award in the Best Hong Kong New Character Design for Licensing Award in 2020.

Compiled by Civil Engineering
and Development Department
www.cedd.gov.hk



In partnership with Hong Kong
Teacher-Librarians' Association
www.hktla.hk



Not for Sale

ISBN 978-988-76195-1-2



9 789887 619512