

# TEAM UP THE PIRATES!

Let's split into four squads.  
Go search for the treasures  
and then assemble on  
Lamma Island!



Solve the Sudoku below and group the three pirate characters  
with the same number into one squad.

1	Yellow Furry I, Pirate Sailor 3	Jack, Hog the Pirate Captain 4	Ariel, Mrs Pirate Captain 2
Blue Furry I, Pirate Sailor 4	Red Furry I, Pirate Sailor 2	Jimmy, Captain Junior 1	3
Jolly, Captain Junior 3	4	2	Orange Furry I, Pirate Sailor 1
Red Furry II, Pirate Sailor 2	Orange Furry II, Pirate Sailor 1	Yellow Furry II, Pirate Sailor 3	Blue Furry II, Pirate Sailor 4

- |   |   |   |   |   |   |   |  |
|---|---|---|---|---|---|---|--|
|  Squad 1 | <ul style="list-style-type: none"> <li>1. Jimmy, Captain Junior</li> <li>2. Orange Furry I, Pirate Sailor</li> <li>3. Orange Furry II, Pirate Sailor</li> </ul> |  Squad 2 | <ul style="list-style-type: none"> <li>1. Ariel, Mrs Pirate Captain</li> <li>2. Red Furry I, Pirate Sailor</li> <li>3. Red Furry II, Pirate Sailor</li> </ul> |  Squad 3 | <ul style="list-style-type: none"> <li>1. Jolly, Captain Junior</li> <li>2. Yellow Furry I, Pirate Sailor</li> <li>3. Yellow Furry II, Pirate Sailor</li> </ul> |  Squad 4 | <ul style="list-style-type: none"> <li>1. Jack, Hog the Pirate Captain</li> <li>2. Blue Furry I, Pirate Sailor</li> <li>3. Blue Furry II, Pirate Sailor</li> </ul> |
|---|---|---|---|---|---|---|--|

Answers can be found on the inner back cover.

# LEUNG SHUEN WAN

Every two years, Leung Shuen Wan celebrates Tin Hau (Empress of Heaven) Festival, which is on the 23rd day of the Third Lunar Month.

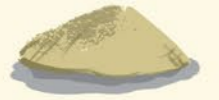


## Map Key:

 Pirate x 3




 Conical hat x 10



 Yellow stool x 1



 Hidden character x 1



# LAI CHI WO

The historic Hakka walled village in Lai Chi Wo was built over 300 years ago. The Fung Shui wood behind the village possesses many precious native trees.



## Map Key:

 Pirate x 3



 Cha Kwo x 17




 Hollow tree x 1



 Hidden character x 1



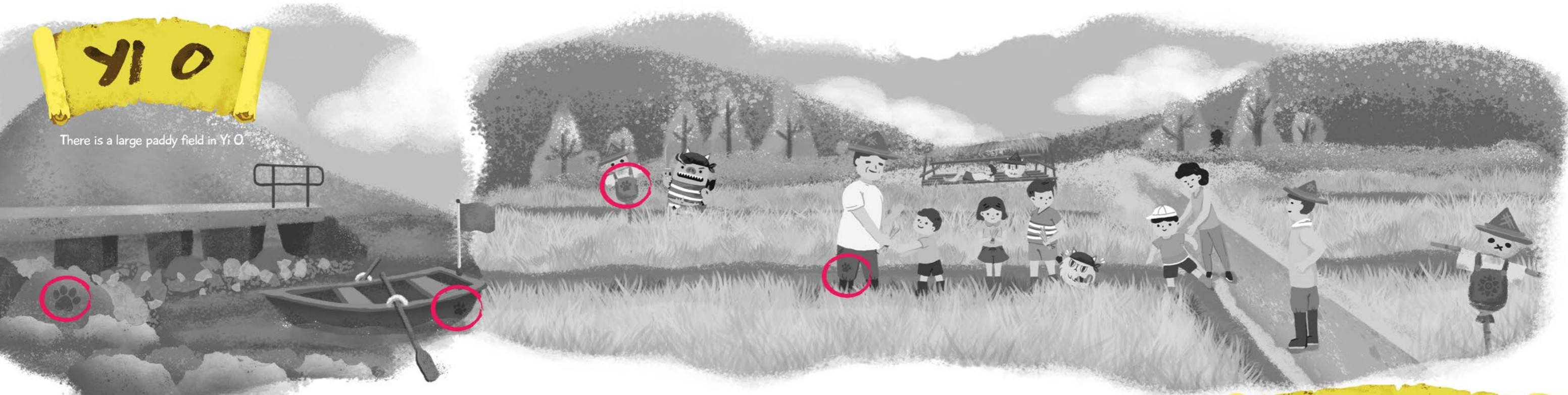
Map Key:

 Hidden character's paw prints x 8



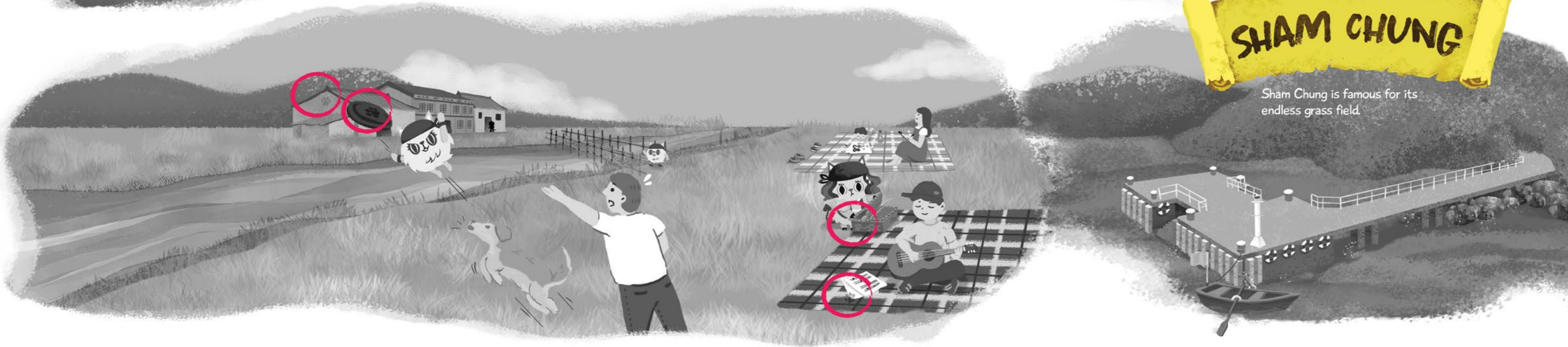
# YI O

There is a large paddy field in Yi O.



# SHAM CHUNG

Sham Chung is famous for its endless grass field.



# KAU SAI VILLAGE

Kau Sai Village celebrates the Hung Shing (God of the Sea) Festival, which is on the 13th of the Second Lunar Month.



## Map Key:

 Pirate x 3



 People taking photos x 10



 Bunting flag x 8



 Hidden character x 1



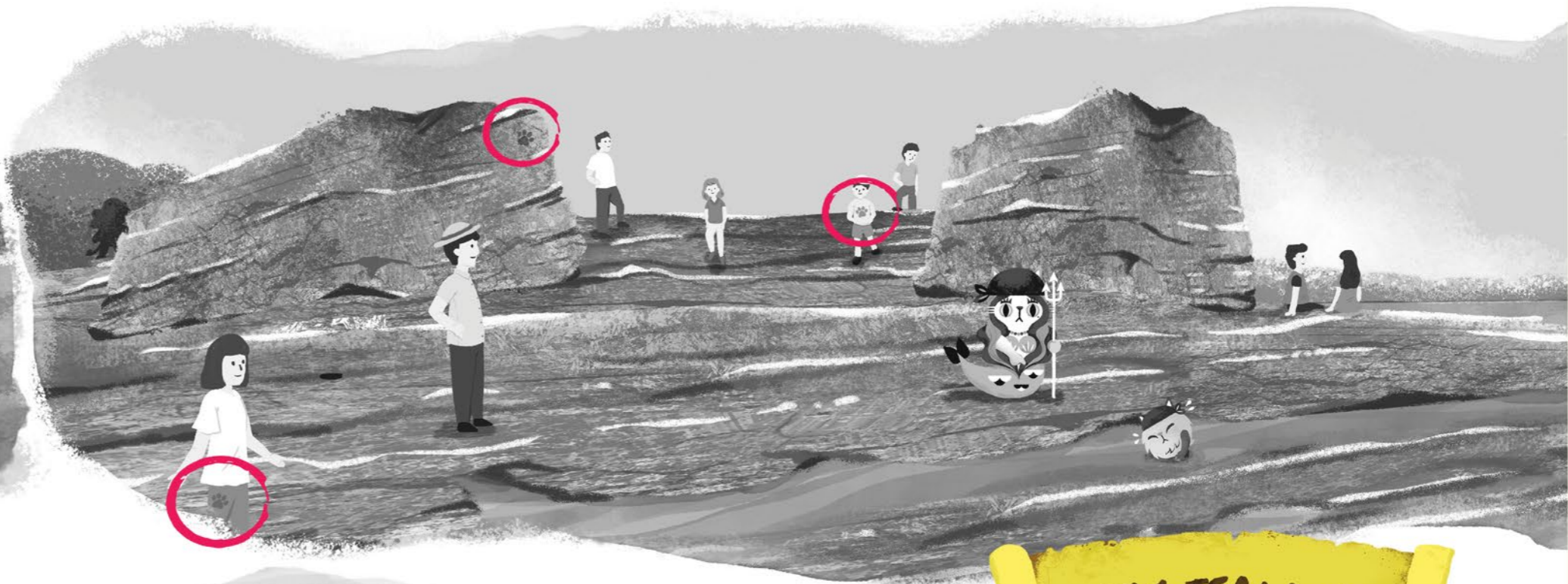
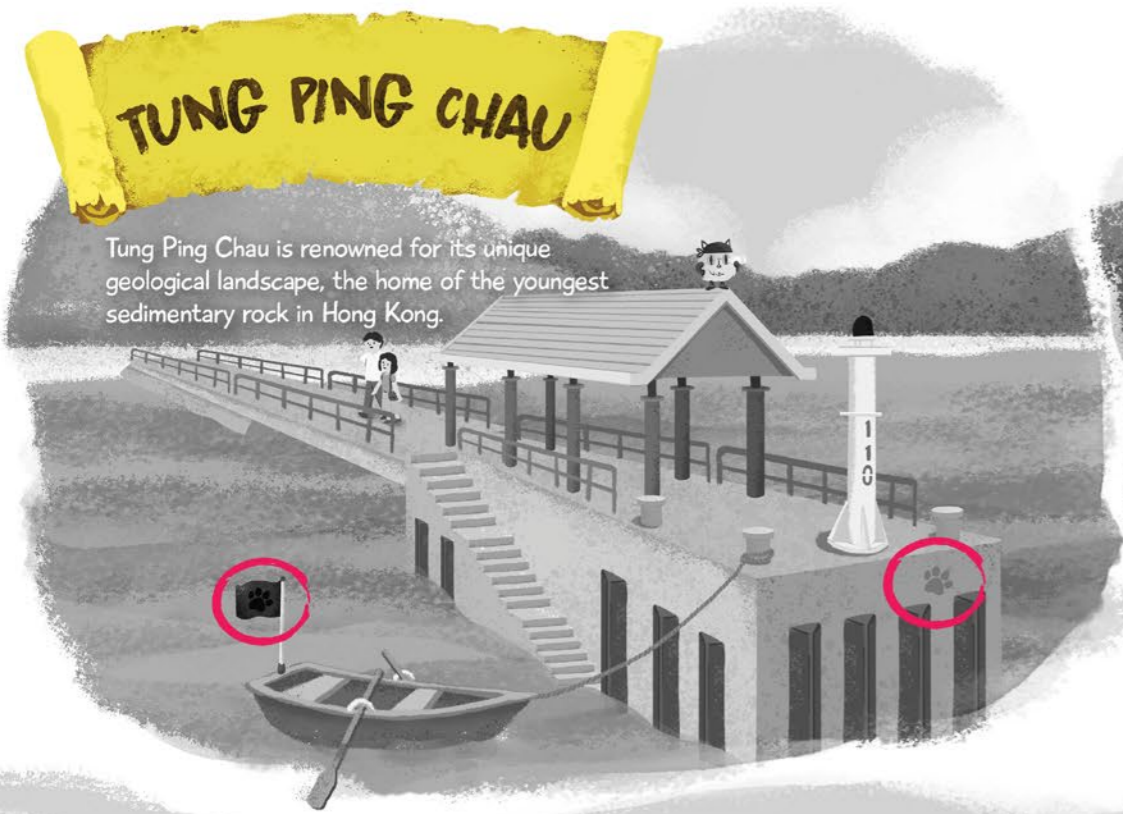
Map Key:

 Hidden character's paw prints x 8



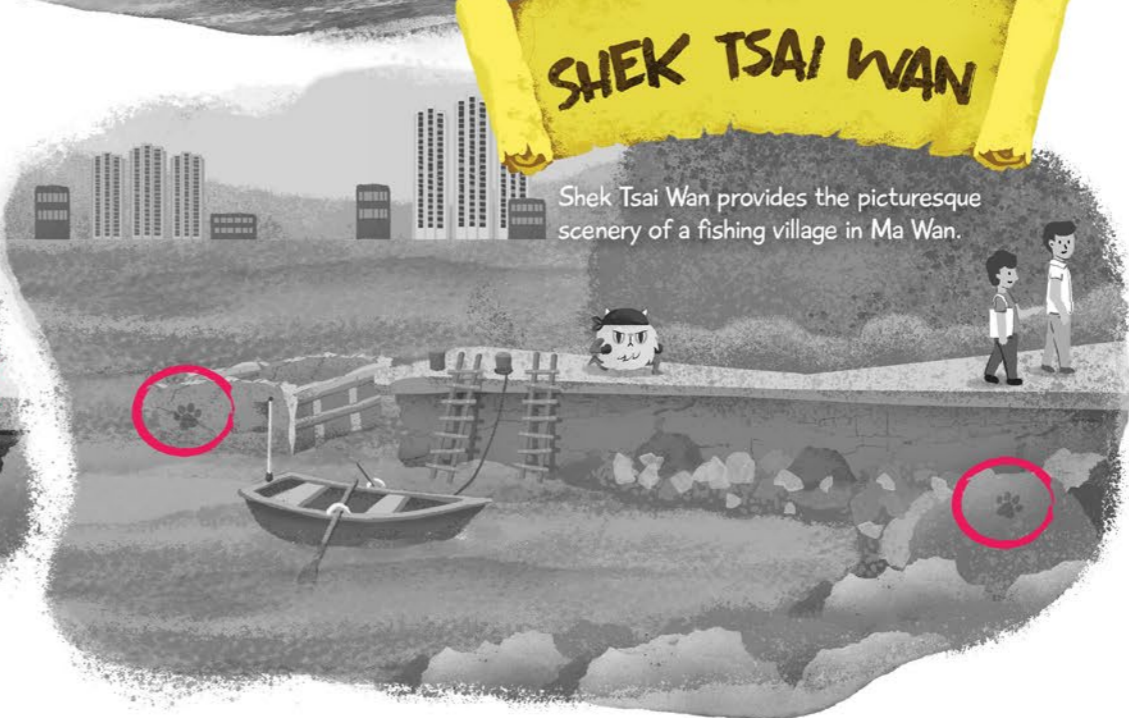
## TUNG PING CHAU

Tung Ping Chau is renowned for its unique geological landscape, the home of the youngest sedimentary rock in Hong Kong.



## SHEK TSAI WAN

Shek Tsai Wan provides the picturesque scenery of a fishing village in Ma Wan.



# LAI CHI CHONG

Lai Chi Chong possesses the geological landscape of volcanoclastic sedimentary rock strata.



## Map Key:

 Fossil of Paralycoptera x 5

