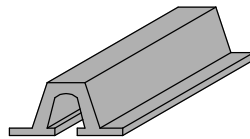
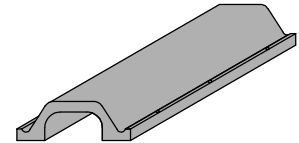


D fenders



Arch fenders



Turtle fenders

OPTIONS FOR RUBBER FENDERS

SCHEMATIC

NOTES:

1. ALL DIMENSIONS ARE IN MILLIMETRES.
2. ALL LEVELS REFER TO PRINCIPAL DATUM(PD) AND ARE IN MILLIMETRES.
3. OPTIONS FOR RUBBER FENDERS MAY INCLUDE D, ARCH OR TURTLE FENDERS WITH SECTION HEIGHTS 150 TO 300mm, DEPENDING ON VESSEL TYPES.
4. SPACING BETWEEN VERTICAL FENDERS : 900 TO 1500mm, DEPENDING ON VESSEL TYPES.
5. THE HORIZONTAL SPACING OF VERTICAL FENDERS SHALL BE ADJUSTED TO AVOID CENTRE OF FIXING BOLTS TO LIE WITHIN 250mm OF CONCRETE EDGE.
6. FOR DETAILS OF RUBBER STEP UNITS, REFER TO DRAWING C3009/4.
7. BOLTS, STUDS AND NUTS SHALL BE OF STAINLESS STEEL GRADE A4-80. WASHERS SHALL BE GRADE 1.4401 STAINLESS STEEL.
8. FOR OTHER DETAILS OF LANDING, REFER TO DRAWINGS C3009/3 AND C3009/4.

E	NOTES 7 AND DRAWING TITLE AMENDED.	Original Signed	03.2015
D	HANDRAIL PLINTHS ON COPING REMOVED AND GRANITE FACING STONE ON THE WHOLE LANDING	Original Signed	10.2004
C	NAME OF DEPARTMENT AMENDED.	Original Signed	09.2004
B	OVERALL REVISION OF FENDERS AND LEVELS REVISED TO PD	Original Signed	12.2002
A	MINOR AMENDMENTS TO GENERAL DETAILS OF LANDING	Original Signed	01.1999
REF.	REVISION	SIGNATURE	DATE

GRAVITY SEAWALL LANDING

(SHEET 2 OF 5)



CIVIL ENGINEERING AND DEVELOPMENT DEPARTMENT

SCALE AS SHOWN

DRAWING NO.

DATE JAN 1991

C3009 / 2E