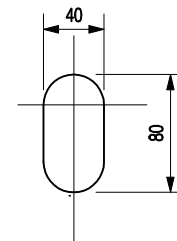


**SECTION B - B**  
SCALE 1 : 5



**SLOT HOLE**  
SCALE 1 : 5

**NOTES:**

- 1 ALL DIMENSIONS ARE IN MILLIMETRES.
- 2 CONCRETE SHALL BE GRADE 50 /20.
- 3 R DENOTES GRADE 250 HOT-ROLLED PLAIN REINFORCEMENT.
- 4 COVER TO REINFORCEMENT SHALL BE 75mm.
- 5 ALL CHAMFERS SHALL BE 10 x 10mm.
- 6 TIDE GAUGE SHALL BE PAINTED WITH 3 COATS OF WHITE AND YELLOW (BS 5252 : 1976 No. 10E55) OIL PAINT ON THE MARKED FACE IN THE MANNER AS SHOWN.
- 7 ALL FIGURES AND LETTERS SHALL BE RECESSED 20mm FROM THE SURFACE AND PAINTED WITH 3 COATS OF BLACK OIL PAINT.
- 8 TIDE GAUGE SHALL BE FIXED WITH 30 x 300 SS (GRADE 316) FISH-TAIL BOLTS AND NUTS WITH WASHERS.

**ELEVATION**  
SCALE 1 : 20

**SECTION A - A**  
SCALE 1 : 20

**REINFORCED CONCRETE  
TIDE GAUGE**  
( SHEET 1 OF 3 )

REF.	REVISION	SIGNATURE	DATE
D	DRAWING TITLE AMENDED.	Original Signed	03.2015
C	NOTE 3 ADDED, COVER AND CONCRETE GRADE AMENDED.	Original Signed	12.2014
B	NAME OF DEPARTMENT AMENDED.	Original Signed	09.2004
A	TIDE GAUGE SPECIFICATION CHANGED.	Original Signed	12.1995



**CIVIL ENGINEERING AND  
DEVELOPMENT DEPARTMENT**

**SCALE AS SHOWN**  
**DATE JAN 1991**

**DRAWING NO.**  
**C3001 /1 D**