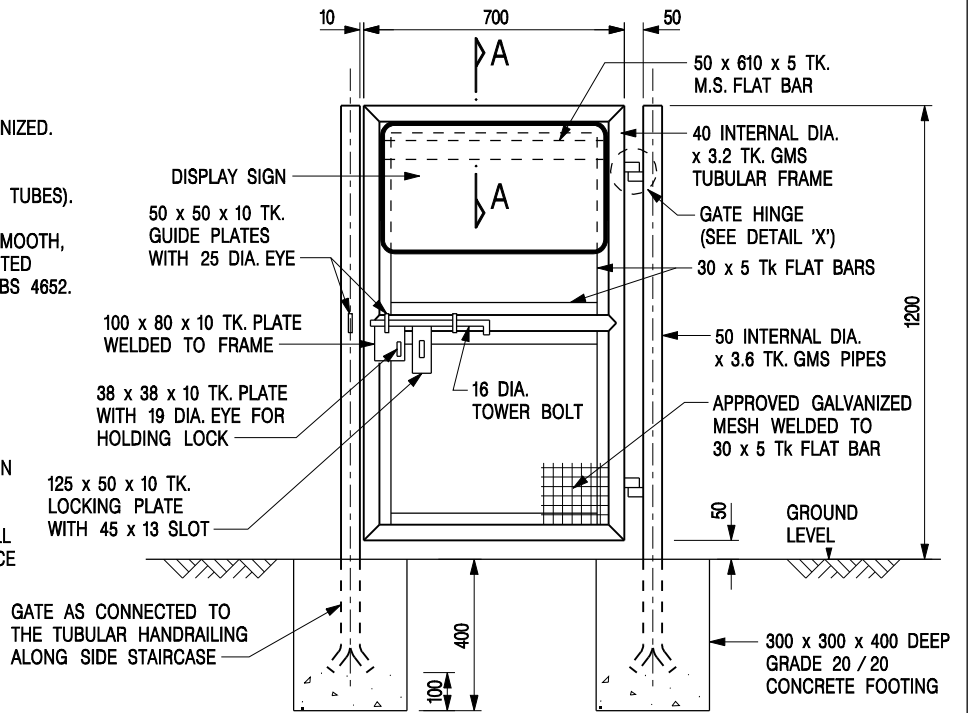


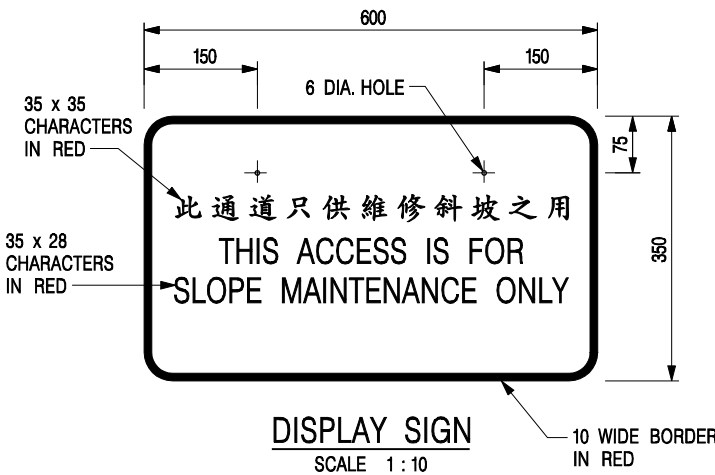
NOTES:

1. ALL DIMENSIONS ARE IN MILLIMETRES.
2. ALL STEELWORK SHALL BE HOT DIP GALVANIZED.
3. ALL STEEL PIPES SHALL COMPLY WITH BS EN 10255 (MEDIUM AND HEAVY SERIES TUBES).
4. ALL WELDS SHALL BE CHIPPED, GROUND SMOOTH, BRUSHED TO REMOVE SLAG AND PROTECTED BY TWO COATS OF ZINC RICH PAINT TO BS 4652.
5. THE DESIGNER SHALL, ON A CASE BY CASE BASIS, CRITICALLY CONSIDER THE NEED FOR A LOCKABLE GATE.
6. IF A LOCKABLE GATE IS CONSIDERED NECESSARY, IT IS PREFERRED TO HAVE SOME SET BACK WITH DUE CONSIDERATION OF THE SURROUNDING TOPOGRAPHY.
7. ALL EXPOSED STEELWORK SURFACES SHALL BE TREATED AND PAINTED IN ACCORDANCE WITH THE GENERAL SPECIFICATION.



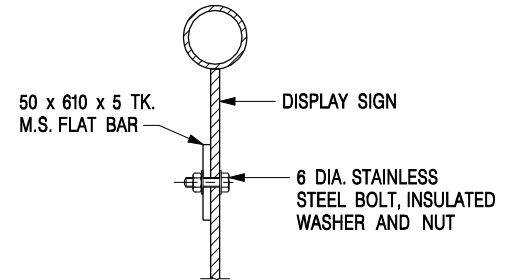
LOCKABLE GATE

SCALE 1:20



DISPLAY SIGN

SCALE 1:10

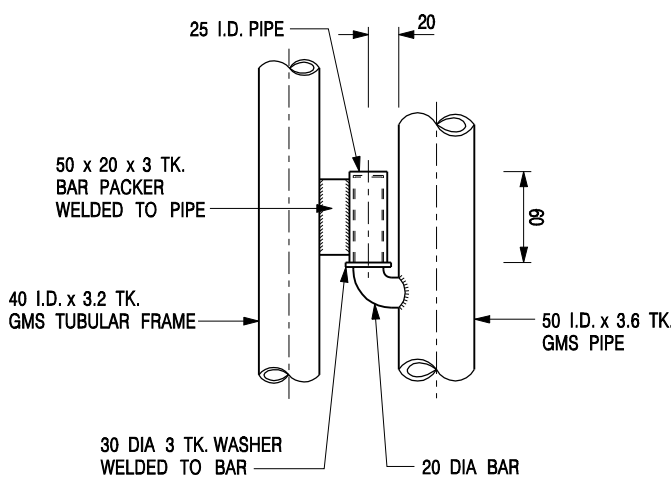


SECTION A - A

SCALE 1:5

NOTES FOR DISPLAY SIGN:

1. SIGN PLATES SHALL BE CUT FROM 6 mm THICK PLATE OF ALUMINIUM OR ALUMINIUM ALLOY.
2. PAINTING OF SIGN PLATES SHALL COMPLY WITH THE REQUIREMENTS GIVEN IN CLAUSE 12.15 OF THE GENERAL SPECIFICATION.
3. ALUMINIUM AND GALVANIZED STEEL IN THE PRESENCE OF WATER CAN FORM GALVANIC CELLS RESULTING IN RAPID CORROSION. INSULATING STRIPS AND WASHERS ARE TO BE PROVIDED AS SHOWN ON THE DRAWINGS TO PREVENT THIS. ANY SUITABLE NON-METALLIC MATERIAL MAY BE USED FOR INSULATING STRIPS AND WASHERS.
4. SIGN COLOUR TO BS 5252 F (1976) : WRITING AND BORDER IN RED - CODE 04 E 53 BACKGROUND IN LIGHT GREEN - CODE 14 E 51



DETAIL 'X'

(DETAILS OF HINGE)

SCALE 1:5

REF.	REVISION	SIGNATURE	DATE
E	NOTE 3 AMENDED.	Original Signed	12.2014
D	DRAWING TITLE AMENDED. HINGE DETAILS ADDED.	Original Signed	05.2008
C	DRAWING TITLE AMENDED. DISPLAY SIGN AND NOTES AMENDED.	Original Signed	02.2007
B	MINOR AMENDMENT.	Original Signed	07.2006
A	NAME OF DEPARTMENT AMENDED.	Original Signed	01.2005
-	NEW ISSUE.	Original Signed	12.2002

LOCKABLE GATE FOR MAINTENANCE STAIRWAY ON SLOPES UP TO 40°



CIVIL ENGINEERING AND DEVELOPMENT DEPARTMENT

SCALE AS SHOWN

DRAWING NO.

DATE DEC 2002

C2508E