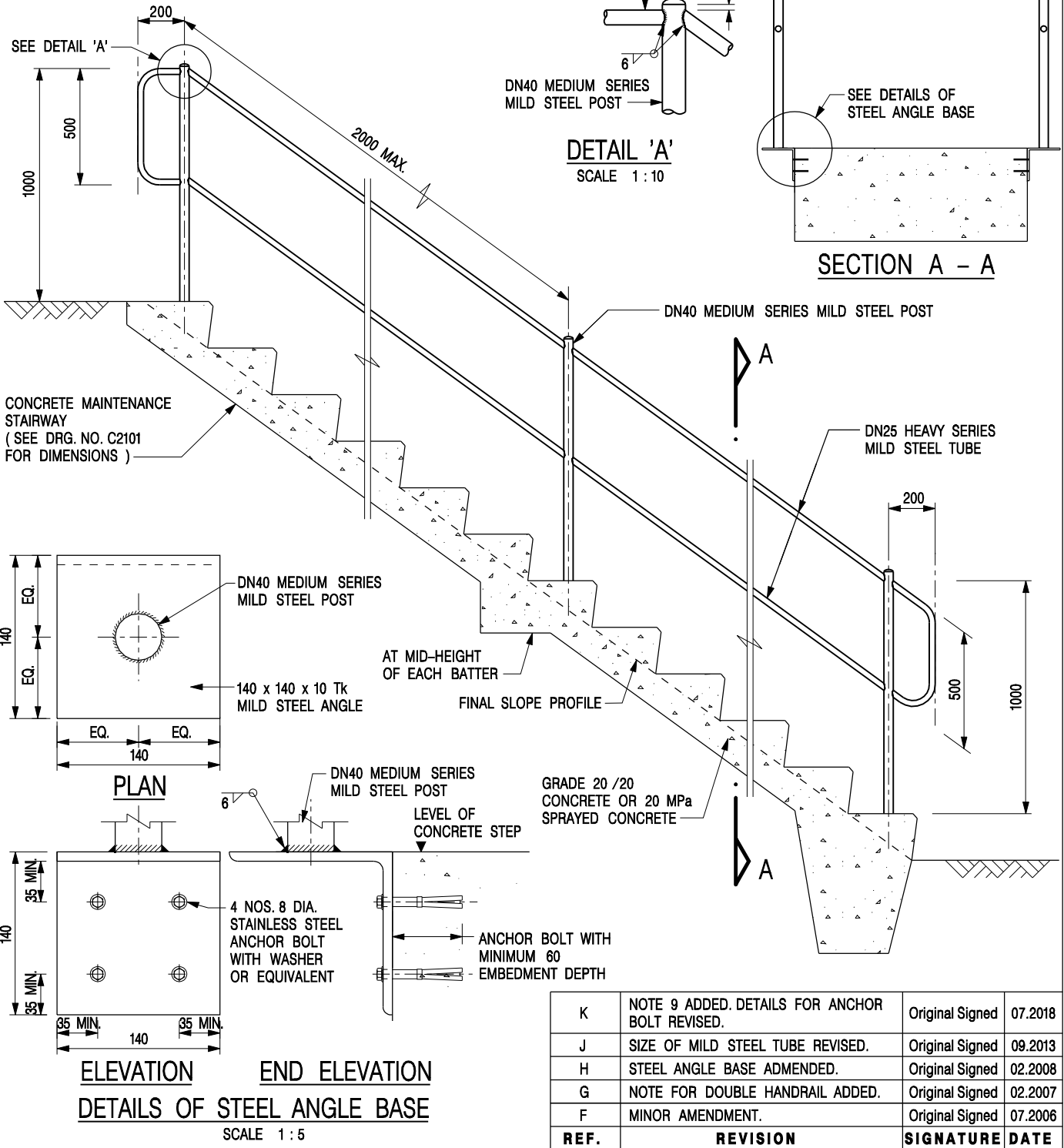


**NOTES:**

1. ALL DIMENSIONS ARE IN MILLIMETRES.
2. HANDRAIL SHALL BE PROVIDED TO THE SIDE(S) WHERE A PERSON IS LIABLE TO FALL OVER 2m.
3. ALL WELDS SHALL BE CHIPPED AND GROUND SMOOTH AND BRUSHED TO REMOVE SLAG AND PROTECTED BY TWO COATS OF ZINC RICH PAINT TO BS4652.
4. ALL STEELWORK SHALL BE HOT DIP GALVANIZED.
5. ALL STEEL POSTS AND TUBES SHALL COMPLY WITH BS EN 10255 (MEDIUM AND HEAVY SERIES TUBES)
6. ALL STEEL ANGLES SHALL COMPLY WITH BS EN 10025 AND BS EN 10056.
7. CONCRETE TO BE PAINTED AS SPECIFIED.
8. ALL EXPOSED STEELWORK SURFACES SHALL BE TREATED AND PAINTED IN ACCORDANCE WITH THE GENERAL SPECIFICATION AND PARTICULAR SPECIFICATION OR AS SPECIFIED BY THE ENGINEER.
9. ALL STAINLESS STEEL ANCHOR BOLTS AND WASHERS SHALL HAVE A DECLARATION OF PERFORMANCE FOR THE CONSTRUCTION PRODUCT COVERED BY A EUROPEAN TECHNICAL ASSESSMENT REPORT ETAG 001 OR APPROVED EQUIVALENT.



K	NOTE 9 ADDED. DETAILS FOR ANCHOR BOLT REVISED.	Original Signed	07.2018
J	SIZE OF MILD STEEL TUBE REVISED.	Original Signed	09.2013
H	STEEL ANGLE BASE ADMENDED.	Original Signed	02.2008
G	NOTE FOR DOUBLE HANDRAIL ADDED.	Original Signed	02.2007
F	MINOR AMENDMENT.	Original Signed	07.2006
<b>REF.</b>	<b>REVISION</b>	<b>SIGNATURE</b>	<b>DATE</b>

**HANDRAILING TO MAINTENANCE STAIRWAY ON SLOPE**

**CEDD** CIVIL ENGINEERING AND DEVELOPMENT DEPARTMENT

SCALE 1 : 25      DRAWING NO. C2103K

DATE JAN 1991

卓越工程 建設香港      We Engineer Hong Kong's Development