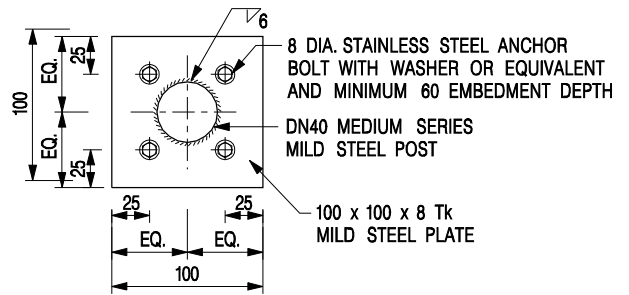
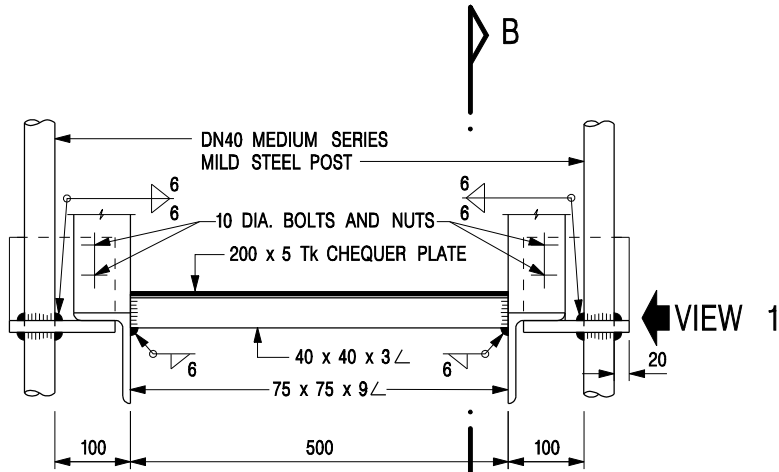


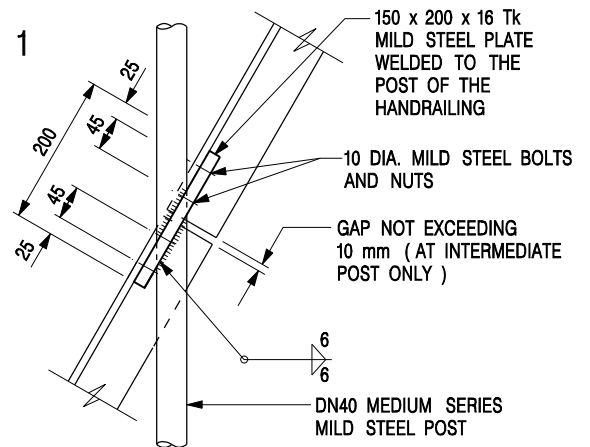
**SECTION B - B**  
SCALE 1 : 10



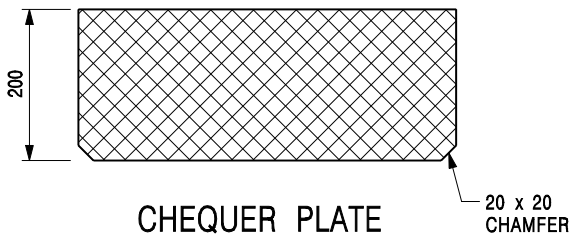
**DETAILS OF BASE PLATE**  
(ALTERNATIVE ARRANGEMENT OF THE POST)  
SCALE 1 : 5



**SECTION A - A**  
SCALE 1 : 10



**VIEW 1**  
SCALE 1 : 10




**CHEQUER PLATE**  
SCALE 1 : 10

**NOTE:**

1. ALL STAINLESS STEEL ANCHOR BOLTS AND WASHERS SHALL HAVE A DECLARATION OF PERFORMANCE FOR THE CONSTRUCTION PRODUCT COVERED BY A EUROPEAN TECHNICAL ASSESSMENT REPORT ETAG 001 OR APPROVED EQUIVALENT.

A	NOTE 1 ADDED. DETAILS FOR ANCHOR BOLT REVISED.	Original Signed	07.2018
-	FORMER DRG. NO. C2102J.	Original Signed	03.2015
<b>REF.</b>	<b>REVISION</b>	<b>SIGNATURE</b>	<b>DATE</b>

**STEEL STAIRCASE FOR  
SLOPE STEEPER THAN 40°  
(SHEET 2 OF 2)**

 <b>CIVIL ENGINEERING AND DEVELOPMENT DEPARTMENT</b>	
<b>SCALE</b> AS SHOWN	<b>DRAWING NO.</b> C2102 /2A
<b>DATE</b> JAN 1991	