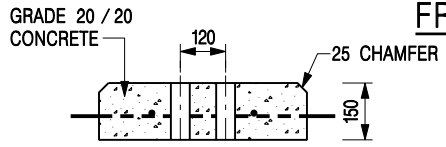
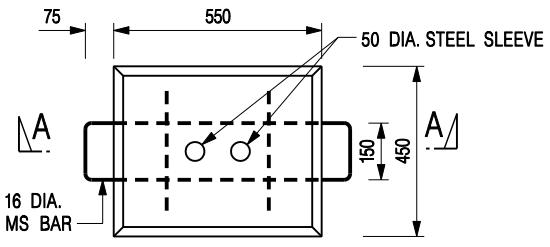


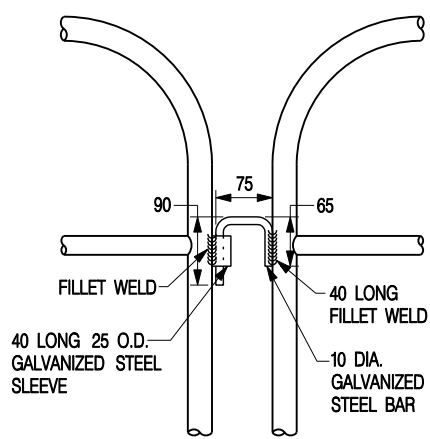
FRONT ELEVATION



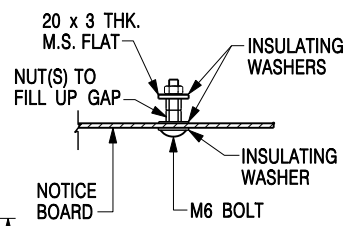
SECTION A-A



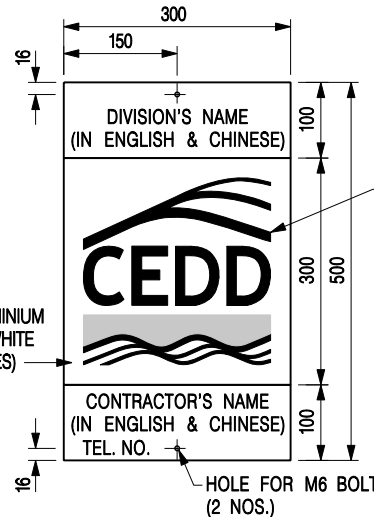
PLAN OF CONCRETE BASE



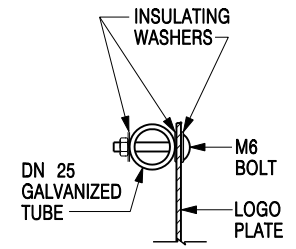
DETAIL 'X'



DETAIL 'Z'



LOGO PLATE



DETAIL 'Y'

NOTES:

- ALL DIMENSIONS ARE IN MILLIMETRES.
- ALL EXPOSED STEEL WORK SURFACES SHALL BE TREATED AND PAINTED OR GALVANIZED IN ACCORDANCE WITH THE GENERAL SPECIFICATION.
- COLOUR OF PAINTING TO BS 5252F :
 (a) TOP BARS : RED AND WHITE, CODE 04E53 & 00E55
 (b) LETTERS, CHARACTERS & LINES : BLACK, CODE 00E53
 (c) LOGO PLATE : WHITE, CODE 00E55
 (d) OTHERS : YELLOW, CODE 08E51
- NOTICE BOARD SHALL BE PROVIDED IN ACCORDANCE WITH DRG. NOS. C1014 / 1, C1014 / 2 & C1018 / 1. OTHER APPROVED FIXING DETAILS WHICH SHALL SECURELY FIX THE NOTICE BOARD TO THE BARRIER, MAY BE USED.
- ALL JOINTS AND CONNECTIONS SHALL BE FILLET WELDED ALL ROUND UNLESS OTHERWISE SPECIFIED.
- OPEN ENDS OF THE TUBULAR POSTS SHALL BE EFFECTIVELY SEALED BY WELDING MILD STEEL PLATES.
- OTHER APPROVED BASE DETAILS FOR THE BARRIERS MAY BE USED.
- GALVANIZED TUBE SHALL BE LIGHT SERIES TO BS 1387.
- THE LENGTH OF A BARRIER PANEL CAN BE REDUCED TO EITHER 2640mm OR 1760mm IF PROVISION OF NOTICE BOARD IS REQUIRED, AND UP TO 880mm IF PROVISION OF NOTICE BOARD IS NOT REQUIRED. IN ANY CASE, THE LOGO PLATE SHALL BE MOUNTED ON EACH BARRIER PANEL AS CLOSE TO THE CENTRE POSITION AS POSSIBLE. FOR REDUCED BARRIER LENGTH OF 2640 / 1760 / 880mm, THE SPACING OF 290mm c / c BETWEEN M.S. FLATS SHALL REMAIN UNCHANGED, AND THE SPACING AT THE TWO ENDS SHALL BE ADJUSTED TO 305 / 300 / 295mm RESPECTIVELY.
- THE HEIGHT AND WIDTH (mm) OF ENGLISH LETTERS, CHINESE CHARACTERS AND NUMBERS FOR LOGO PLATE SHALL BE 12 x 10, 21 x 21 AND 18 x 14 RESPECTIVELY. DETAILS OF THE DEPARTMENTAL LOGO SHALL BE IN ACCORDANCE WITH DRG. NO. C1001.

A	MINOR AMENDMENT	Original Signed	03.2015
-	NEW ISSUE.	Original Signed	01.2010
REF.	REVISION	SIGNATURE	DATE

TEMPORARY BARRIER

CEDD CIVIL ENGINEERING AND DEVELOPMENT DEPARTMENT

SCALE AS SHOWN **DRAWING NO.** C1013A
DATE JAN 2010