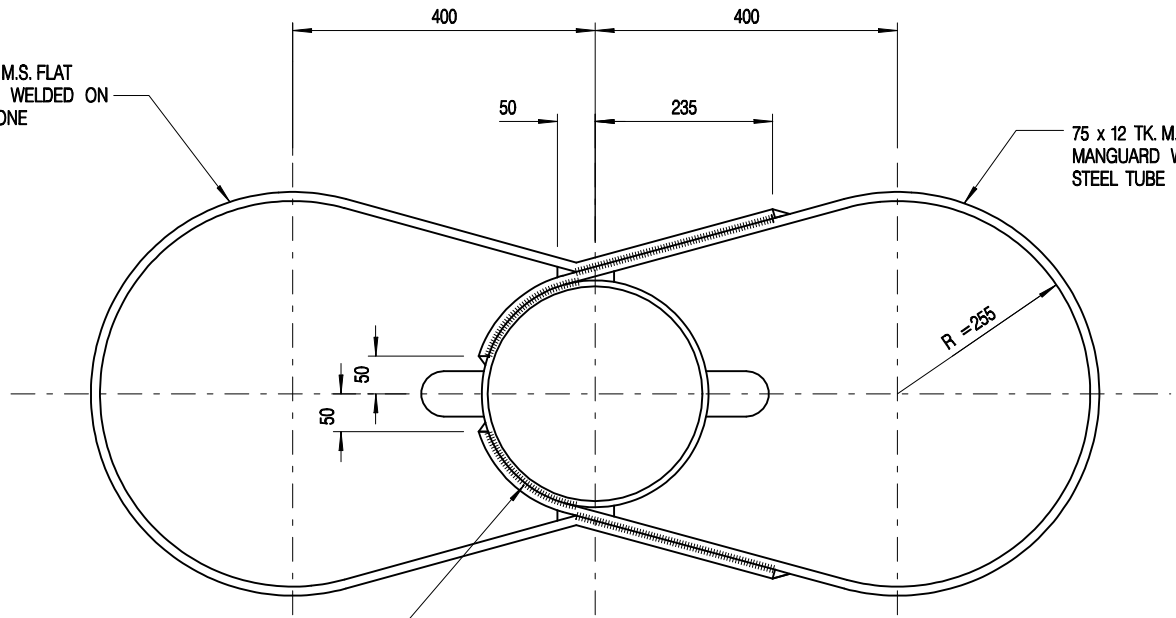


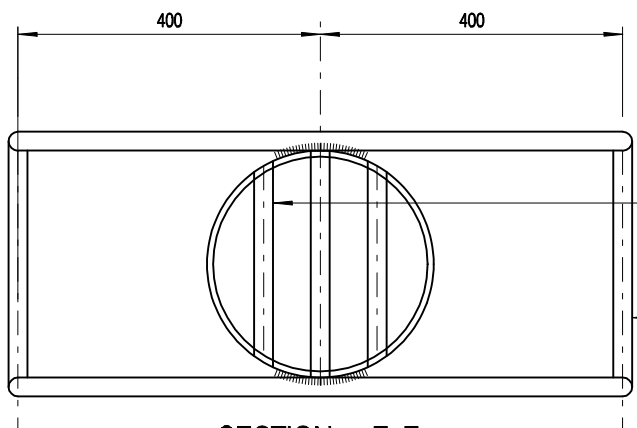
75 x 12 TK. M.S. FLAT MANGUARD WELDED ON ANOTHER ONE

75 x 12 TK. M.S. FLAT MANGUARD WELDED TO STEEL TUBE



7 FILLET WELD

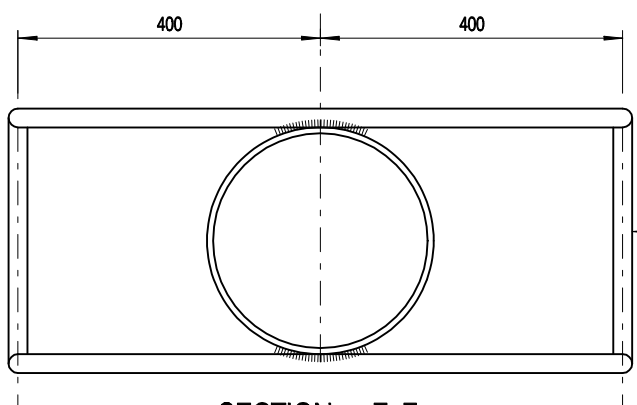
SECTION D-D



3 NOS. 25 DIA. M.S. BARS THROUGH AND WELDED ON OUTSIDE OF TUBE TO SUPPORT A BATTERY CRADLE

25 DIA. JACOB STEP IRONS WELDED ON STEEL TUBE

SECTION E-E



25 DIA. JACOB STEP IRONS WELDED ON STEEL TUBE

SECTION F-F

NOTE:

1 ALL NOTES ARE SHOWN IN DRAWING NO. C3018/1.

A	SECTION F-F ADDED AND DRAWING TITLE AMENDED	Original Signed	06.2019
REF.	REVISION	SIGNATURE	DATE

**SOLAR ENERGY TYPE
NAVIGATION LIGHT POST
(SHEET 4 OF 6)**



**CIVIL ENGINEERING AND
DEVELOPMENT DEPARTMENT**

SCALE 1 : 10

DRAWING NO.

DATE JAN 2006

C3018 / 4A