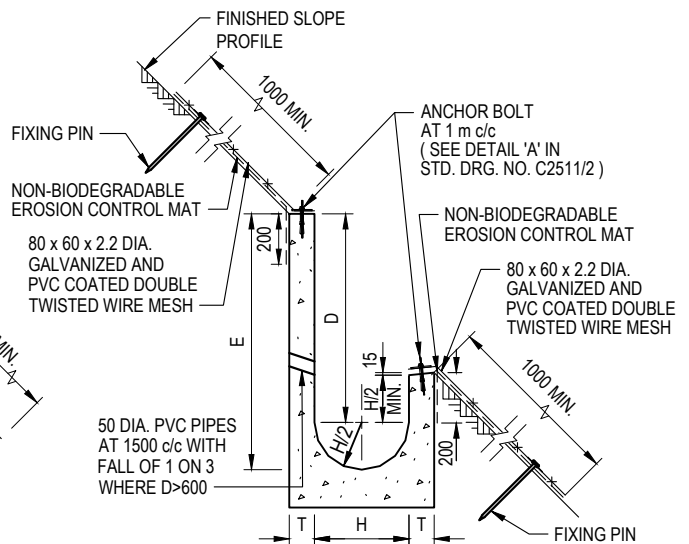
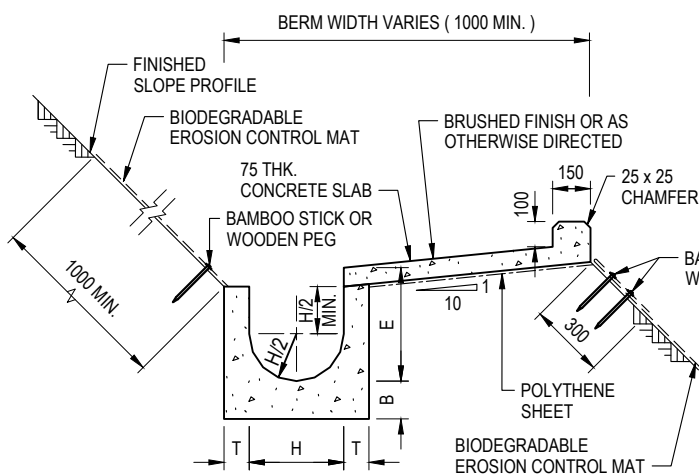


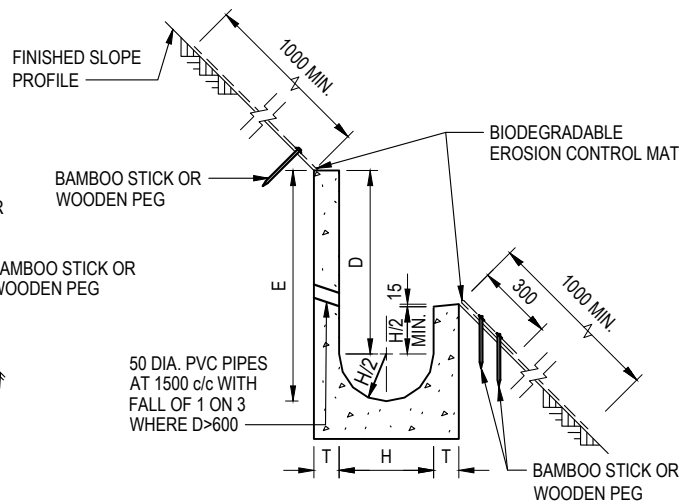
**U-CHANNELS CONSTRUCTED ON BERM WITH NON-BIODEGRADABLE EROSION CONTROL MAT**



**U-CHANNELS NOT CONSTRUCTED ON BERM WITH NON-BIODEGRADABLE EROSION CONTROL MAT**



**U-CHANNELS CONSTRUCTED ON BERM WITH BIODEGRADABLE EROSION CONTROL MAT**



**U-CHANNELS NOT CONSTRUCTED ON BERM WITH BIODEGRADABLE EROSION CONTROL MAT**

**NOTES:**

- ALL DIMENSIONS ARE IN MILLIMETRES.
- ALL CONCRETE SHALL BE GRADE 20 / 20.
- CONCRETE SURFACE FINISH SHALL BE CLASS U2, F2 OR BRUSHED FINISH AS DIRECTED.
- SPACING OF EXPANSION JOINT IN CHANNELS, BERM SLABS AND APRONS TO BE 10 METRES MAXIMUM, SEE STD. DRG. NO. C2413 FOR DETAILS.
- JOINTS FOR CHANNELS, BERM SLABS, APRONS AND WALLS, ETC. TO BE ON THE SAME ALIGNMENT.
- FOR DIMENSIONS T, H, & B, SEE TABLE BELOW.
- FOR TYPICAL FIXING PIN DETAILS, SEE STD. DRG. NO. C2511/2.
- MINIMUM SIZE OF 25 x 50 x 300 mm SHALL BE PROVIDED FOR WOODEN PEG.
- MINIMUM SIZE OF 10 mm DIAMETER WITH 200 mm LONG SHALL BE PROVIDED FOR BAMBOO STICK.
- THE FIXING DETAILS OF NON-BIODEGRADABLE AND BIODEGRADABLE EROSION CONTROL MATS ON EXISTING BERM SHALL REFER TO STD. DRG. NO. C2511/1.

NOMINAL SIZE H	T	B	REINFORCEMENT
≤ 300	80	100	A252 MESH PLACED CENTRALLY AND T=100 WHEN E>650
375 - 600	100	150	
675 - 900	125	175	A252 MESH PLACED CENTRALLY

REF.	REVISION	SIGNATURE	DATE
J	BIM OBJECT REVISION.	Original Signed	12.2025
I	MINOR AMENDMENT.	Original Signed	07.2018
H	FIXING DETAILS OF BIODEGRADABLE EROSION CONTROL MAT ADDED.	Original Signed	12.2017
G	DIMENSION TABLE AMENDED.	Original Signed	01.2005
F	MINOR AMENDMENT.	Original Signed	01.2004
E	GENERAL REVISION.	Original Signed	12.2002
D	MINOR AMENDMENT.	Original Signed	08.2001
C	150 x 100 UPSTAND ADDED AT BERM.	Original Signed	6.99
B	MINOR AMENDMENT.	Original Signed	3.94
A	MINOR AMENDMENT.	Original Signed	10.92

**DETAILS OF HALF-ROUND AND U-CHANNELS (TYPE B - WITH EROSION CONTROL MAT APRON)**

**CEDD**  
CIVIL ENGINEERING AND DEVELOPMENT DEPARTMENT

SCALE: DIAGRAMMATIC      DRAWING NO. C2410J

DATE: JAN 1991