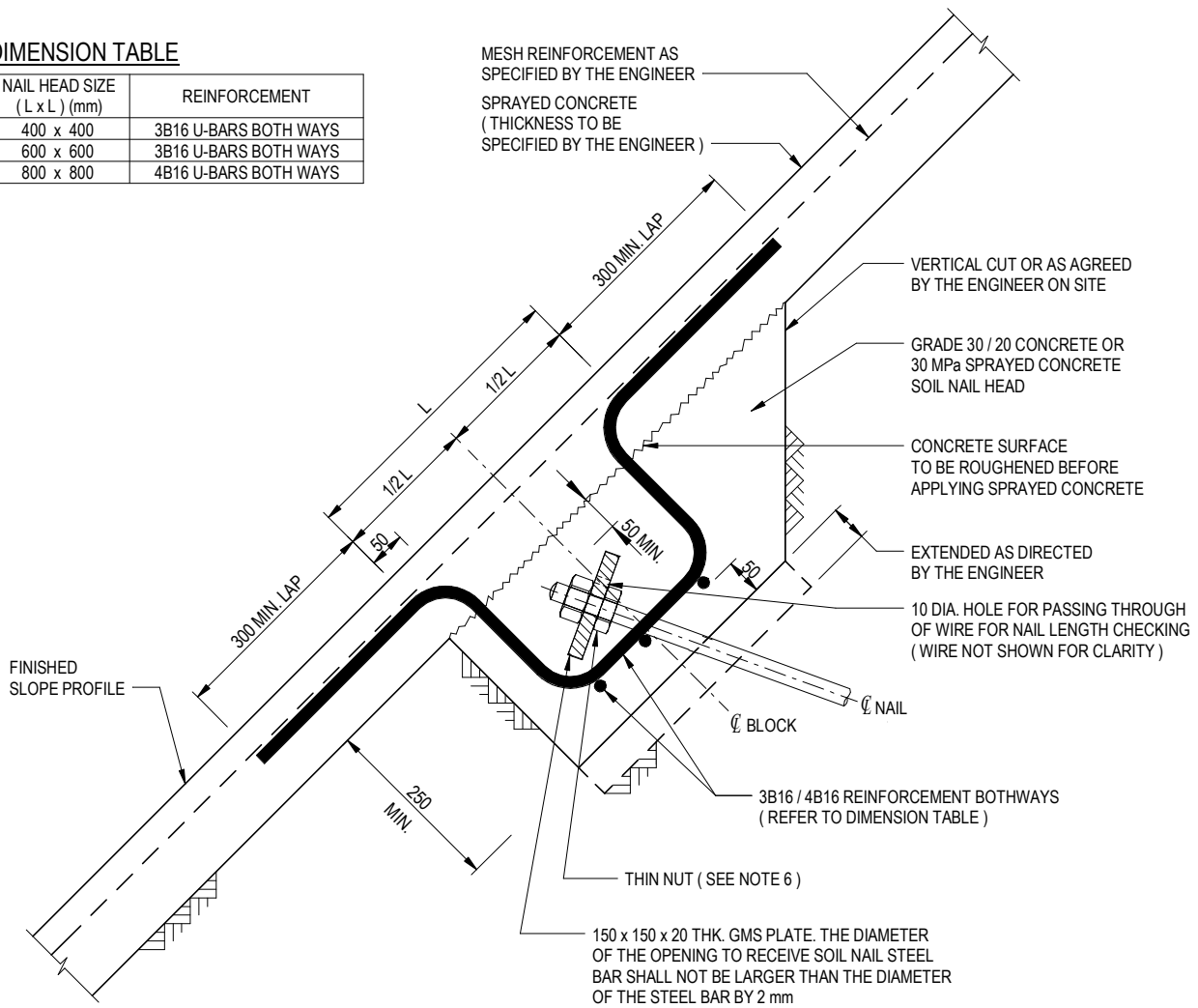


**DIMENSION TABLE**

NAIL HEAD SIZE (L x L) (mm)	REINFORCEMENT
400 x 400	3B16 U-BARS BOTH WAYS
600 x 600	3B16 U-BARS BOTH WAYS
800 x 800	4B16 U-BARS BOTH WAYS

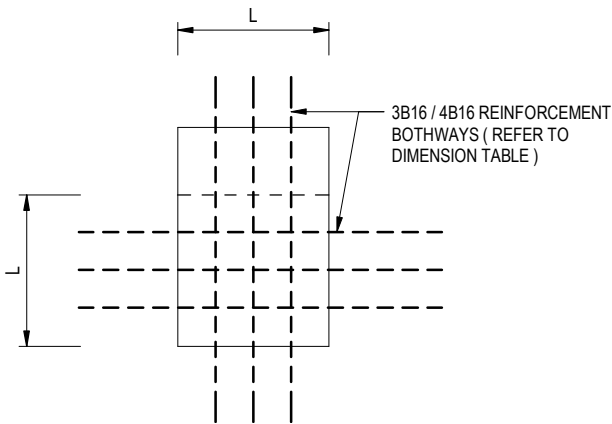


**TYPICAL SECTION OF SOIL NAIL HEAD FOR SPRAYED CONCRETE SLOPE SURFACE**

SCALE 1 : 10

**NOTES:**

- ALL DIMENSIONS ARE IN MILLIMETRES.
- MINIMUM CONCRETE COVER TO MESH REINFORCEMENT SHALL BE 25 mm OR OTHERWISE SPECIFIED.
- THE SIZE OF SOIL NAIL HEAD SHALL BE SPECIFIED BY THE ENGINEER.
- CONSTRUCTION OF SOIL NAIL HEAD SHALL BE REFERRED TO GENERAL SPECIFICATION FOR CIVIL ENGINEERING WORKS.
- B DENOTES GRADE 500B RIBBED REINFORCEMENT.
- FOR SOIL NAIL HEADS CONSTRUCTED BY 2-STAGE SPRAYED CONCRETE ACCORDING TO GENERAL SPECIFICATION FOR CIVIL ENGINEERING WORKS, THE THIN NUT SHALL BE OMITTED.




**VIEW NORMAL TO SOIL NAIL HEAD FOR SPRAYED CONCRETE SLOPE SURFACE**

SCALE 1 : 20

M	BIM OBJECT REVISION.	Original Signed	12.2025
L	NOTE 4 AMENDED AND NOTE 6 ADDED.	Original Signed	04.2016
K	TITLE REVISED.	Original Signed	06.2015
J	DRAWING TITLE AND SUB-TITLE AMENDED.	Original Signed	03.2015
H	BARS NOTATIONS AMENDED.	Original Signed	12.2014
G	DIMENSION TABLE ADDED.	Original Signed	08.2014
F	NOTES AND REINFORCEMENT DETAILS AMENDED.	Original Signed	02.2008
E	10 DIA. HOLE ON GMS PLATE ADDED.	Original Signed	01.2005
REF.	REVISION	SIGNATURE	DATE

**TYPICAL DETAILS OF SOIL NAIL (SHEET 3 OF 8)**

 <b>CIVIL ENGINEERING AND DEVELOPMENT DEPARTMENT</b>	
SCALE AS SHOWN	DRAWING NO.
DATE JAN 1991	C2106 /3M