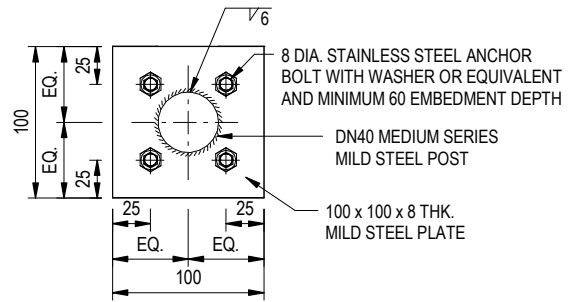
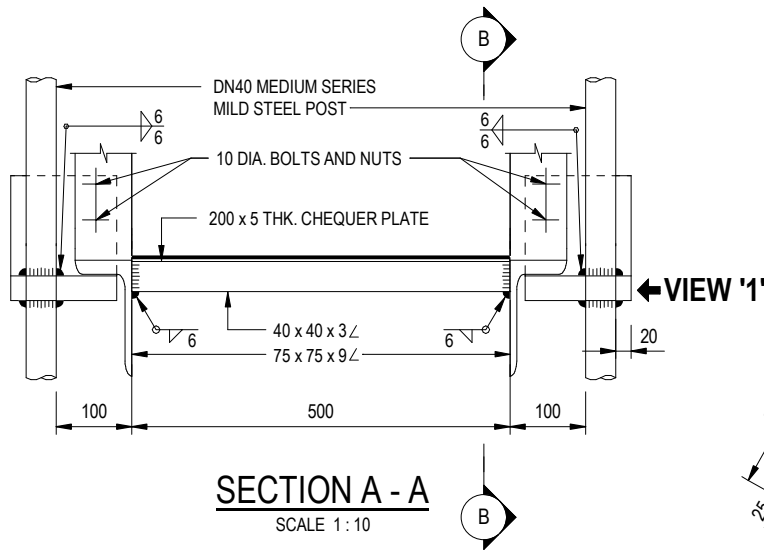


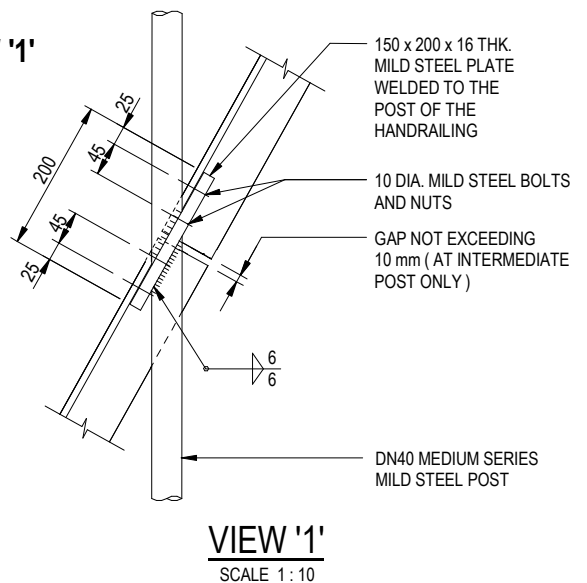
**SECTION B - B**  
SCALE 1 : 10



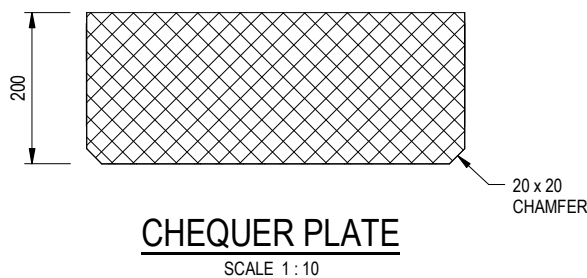
**DETAILS OF BASE PLATE**  
(ALTERNATIVE ARRANGEMENT OF THE POST)  
SCALE 1 : 5



**SECTION A - A**  
SCALE 1 : 10



**VIEW '1'**  
SCALE 1 : 10



**CHEQUER PLATE**  
SCALE 1 : 10

**NOTE:**

1. ALL STAINLESS STEEL ANCHOR BOLTS AND WASHERS SHALL HAVE A DECLARATION OF PERFORMANCE FOR THE CONSTRUCTION PRODUCT COVERED BY A EUROPEAN TECHNICAL ASSESSMENT REPORT ETAG 001 OR APPROVED EQUIVALENT.

B	BIM OBJECT REVISION.	Original Signed	12.2025
A	NOTE 1 ADDED. DETAILS FOR ANCHOR BOLT REVISED.	Original Signed	07.2018
-	FORMER DRG. NO. C2102J.	Original Signed	03.2015
REF.	REVISION	SIGNATURE	DATE

**STEEL STAIRCASE FOR  
SLOPE STEEPER THAN 40°  
(SHEET 2 OF 2)**



**CIVIL ENGINEERING AND  
DEVELOPMENT DEPARTMENT**

SCALE AS SHOWN

DRAWING NO.

DATE JAN 1991

**C2102 /2B**