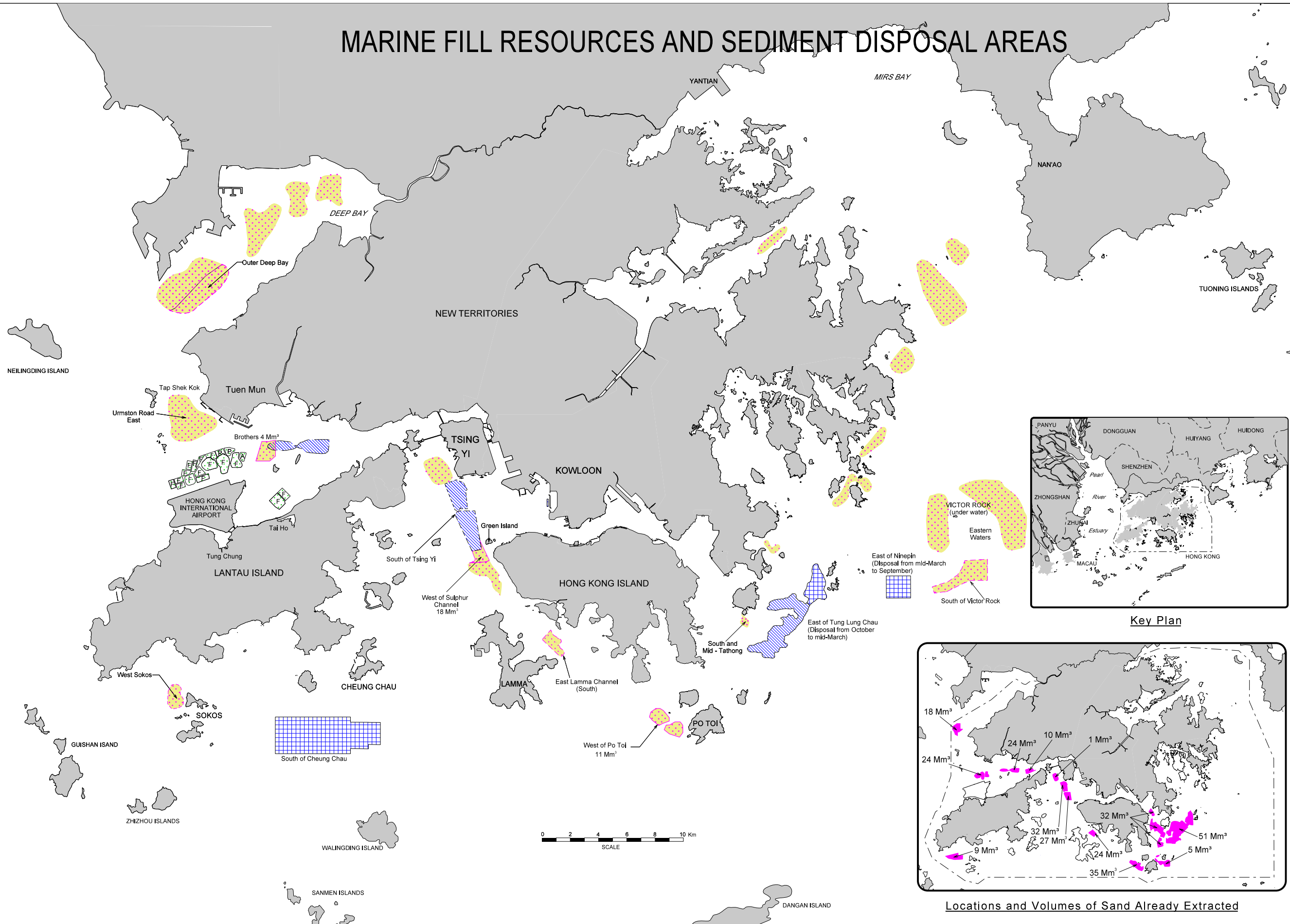
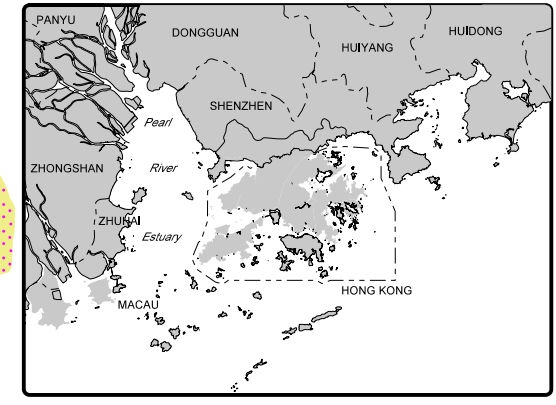


MARINE FILL RESOURCES AND SEDIMENT DISPOSAL AREAS

MFC

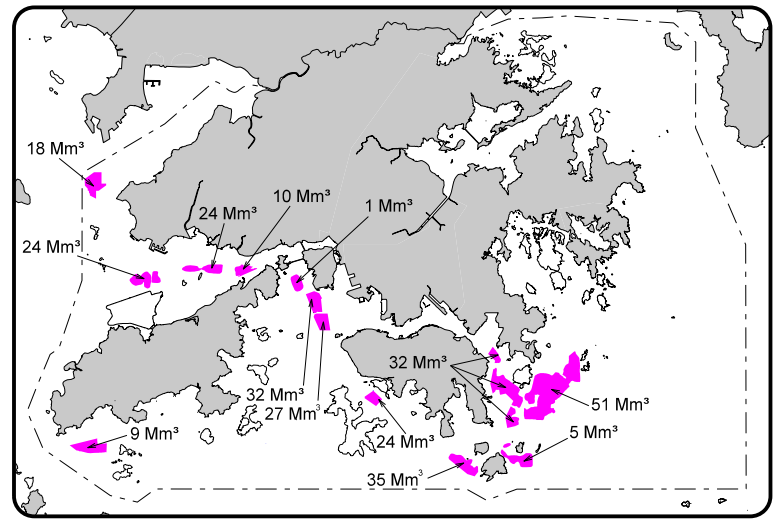


- Open sea disposal area for disposal of uncontaminated sediment
- Exhausted sand borrow pit for disposal of uncontaminated sediment (dashed margin - currently not in use)
- Contained pit for disposal of contaminated sediment (F - filled and already fully capped, A - active, P - planned)
- Sand deposit - Extent prior to dredging
- Sand deposit - With constraints on dredging (e.g. environmental limitations, thick overburden, etc.)
- Sand deposit - Not being used on environmental or other grounds



Key Plan

- Notes :
1. Volume of sand shown in Mm³.
 2. Reclamation areas are indicative.
 3. This drawing supersedes MFC-001U.
 4. Up-to-date information is available from MFC Secretariat, CED, CEDD.
- Tel : (852) 2762 5598
 Fax : (852) 2714 0113
 E-mail : candiesckw@cedd.gov.hk
 Web Site: <http://www.cedd.gov.hk/eng/services/fillmanagement/index.htm>



Locations and Volumes of Sand Already Extracted

MARINE FILL RESOURCES AND SEDIMENT DISPOSAL AREAS

FILE NO: GCFM 5 / 2 / 20 - 1C

DATE: May 2019

DRAWING NO. **MFC-001V** SCALE: AS SHOWN

PREPARED BY:
 FILL MANAGEMENT DIVISION
 CIVIL ENGINEERING OFFICE
 CIVIL ENGINEERING AND DEVELOPMENT DEPARTMENT
 GOVERNMENT OF THE HONG KONG SPECIAL ADMINISTRATIVE REGION
 on behalf of the MARINE FILL COMMITTEE