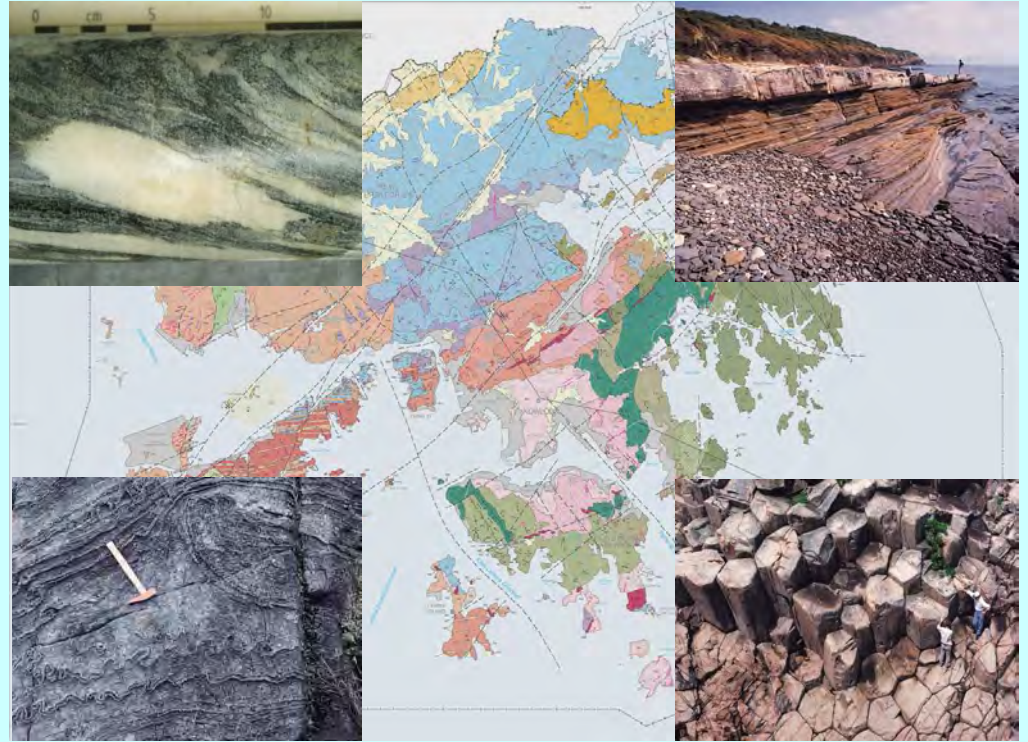
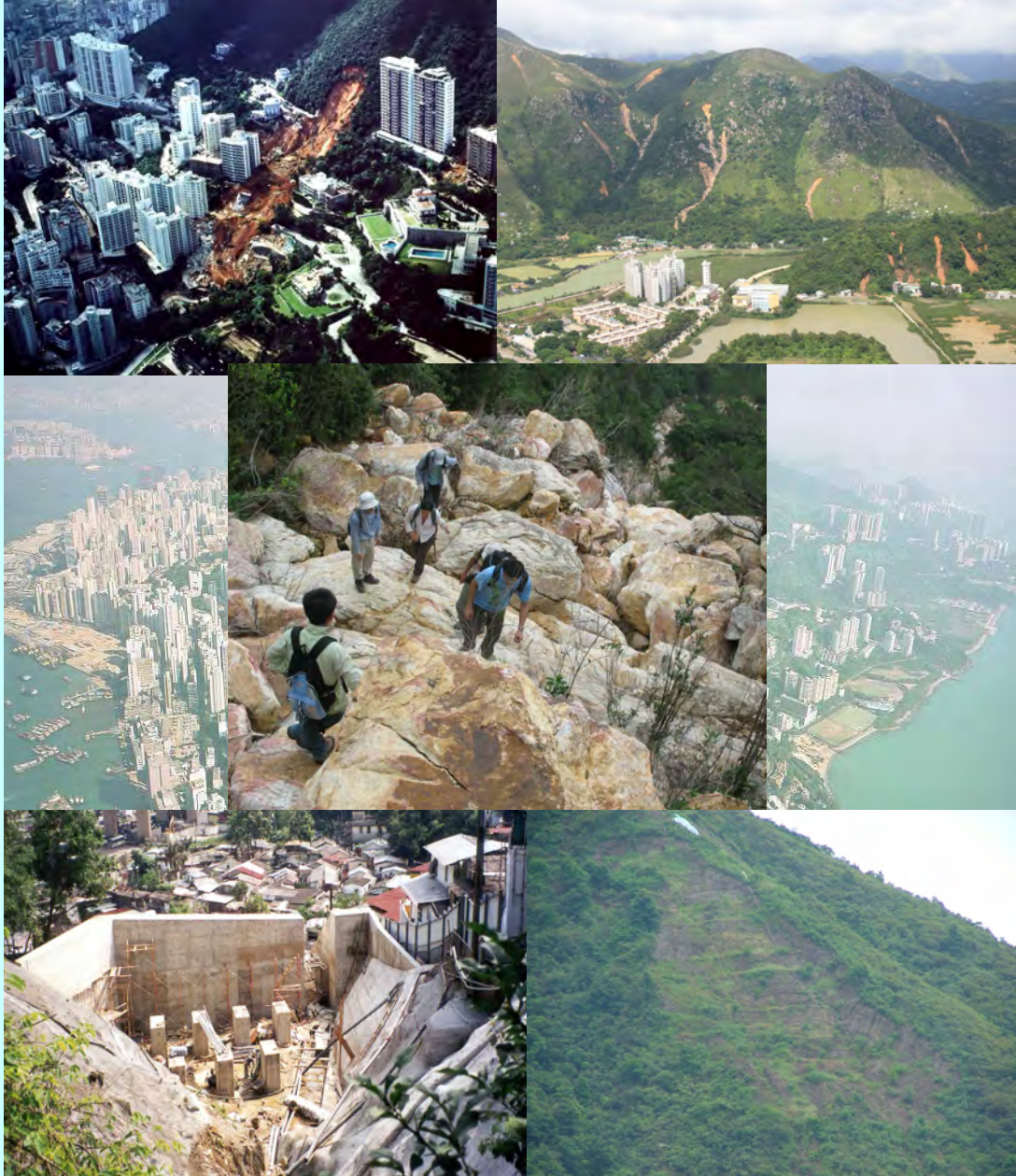
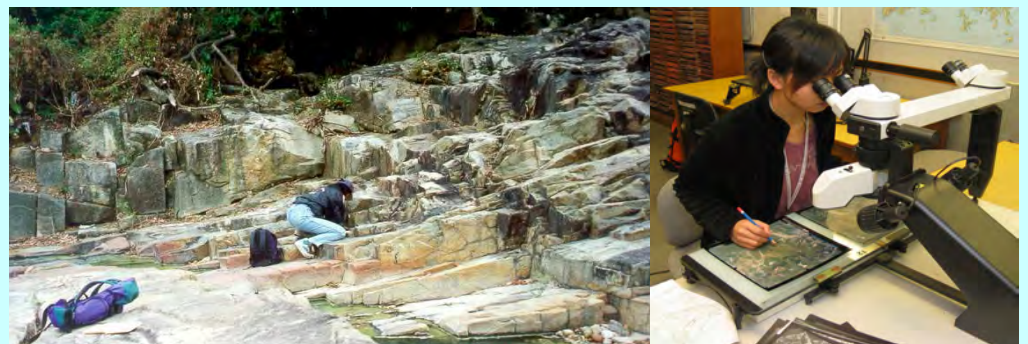


Engineering Geology Graduate (EGG) Training Geotechnical Engineering Office (GEO)

GEO is world-renowned for its expertise, innovations and achievements in slope safety. Geologists play a key role in meeting geotechnical challenges to facilitate safe and sustainable development in Hong Kong.



Hong Kong's fascinating geology covers 400 million years of evolution. Apart from geological diversity, many landslide problems are related to the subtropical weathering. Problems are further compounded by structural weakness in the original rock being inherited in the soil, giving rise to complex materials.



EGG Entry Requirements: A permanent resident of the HKSAR holding a degree in Geology, Earth Sciences or Applied Earth Sciences.

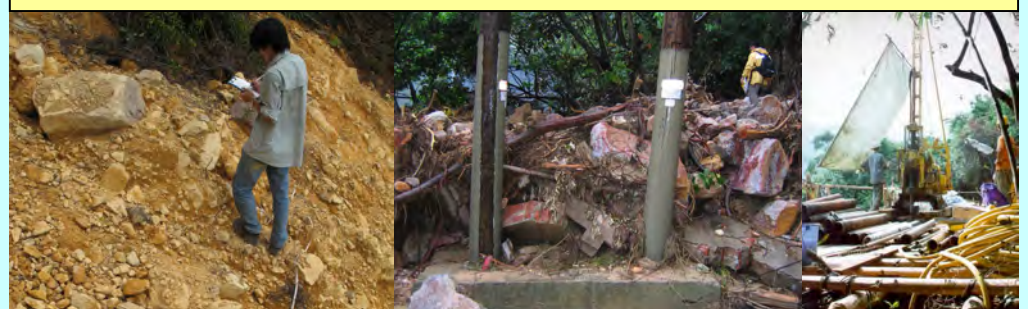
3-year structured and diversified training with supervision and mentoring by experienced professionals:

- 12 months of geological survey, engineering geology and terrain study
- 4 months of ground investigation and laboratory testing
- 8 months of geotechnical design
- 12 months of construction site

Since 1985, GEO has been operating the EGG training scheme to train suitable Earth Sciences graduates to serve the need of the industry in engineering geological skill and knowledge. We have more than 230 geo-professionals. More than 70% of the geologists were trained under the EGG training scheme.

Key functions of geologists in GEO:

- Geological surveying and archiving of geological information
- Production of geological maps
- Engineering geological studies
- Natural terrain hazard studies
- Landslide investigation
- Application of remote sensing technology
- Ground investigation and geological advisory services
- Geological input to land use planning and development projects



土木工程拓展署 土力工程處
Geotechnical Engineering Office (<http://hkss.cedd.gov.hk>)
Civil Engineering and Development Department (<http://www.cedd.gov.hk>)

Please see <http://hkss.cedd.gov.hk> for further information