

APPENDIX G  
LANDSLIDE GEOMORPHOLOGICAL MODELS



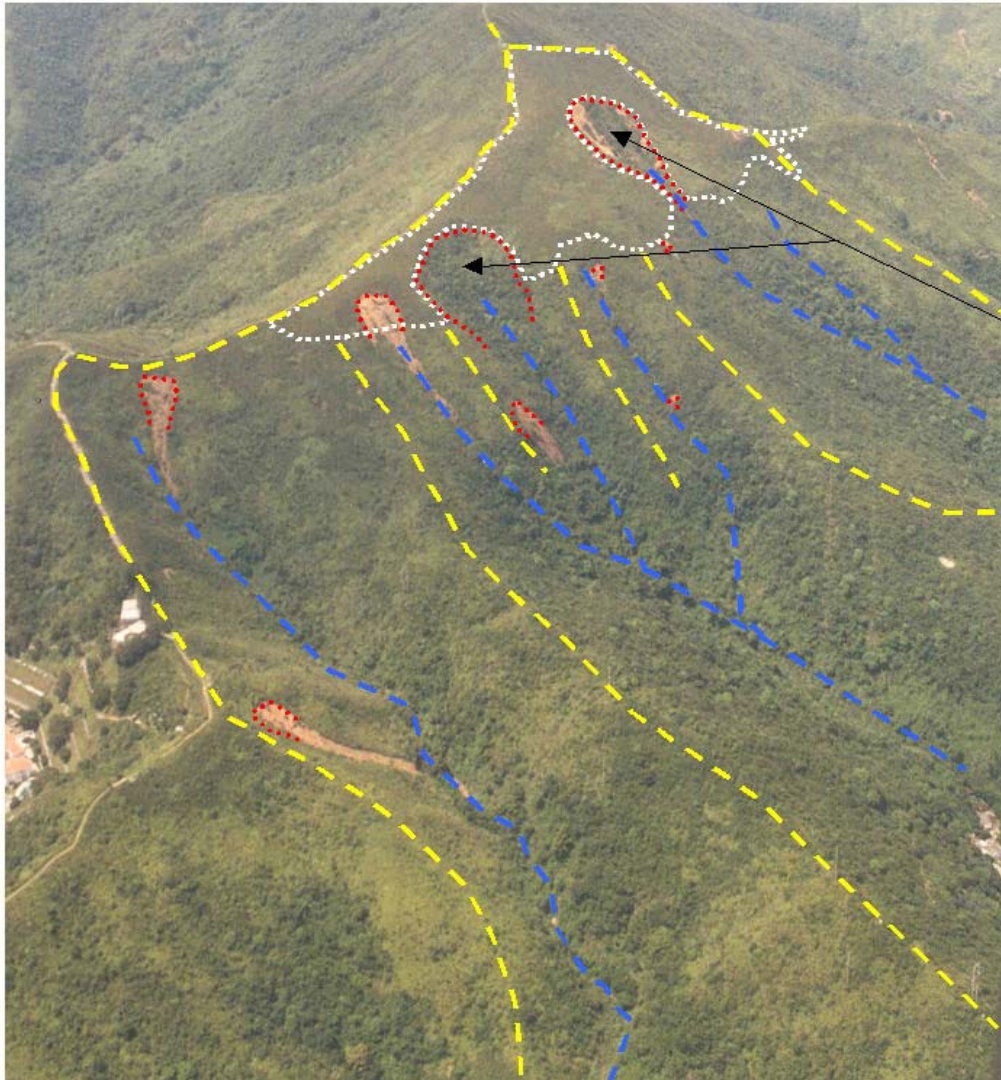
**Type I Landslide (Shallow)**

**Location:** At the boundary between the upper and lower assemblage, generally at the heads of drainage lines.

**Description:** Shallow translational slide (~0.5 m to 2 m deep) typically along the old colluvium/saprolite interface.

**Typical Size:** ~5 m to 25 m wide.

Figure G1 – Geomorphological Setting of Type I Landslide (Shallow)



**Type I Landslide (Deep Seated Multiple)**

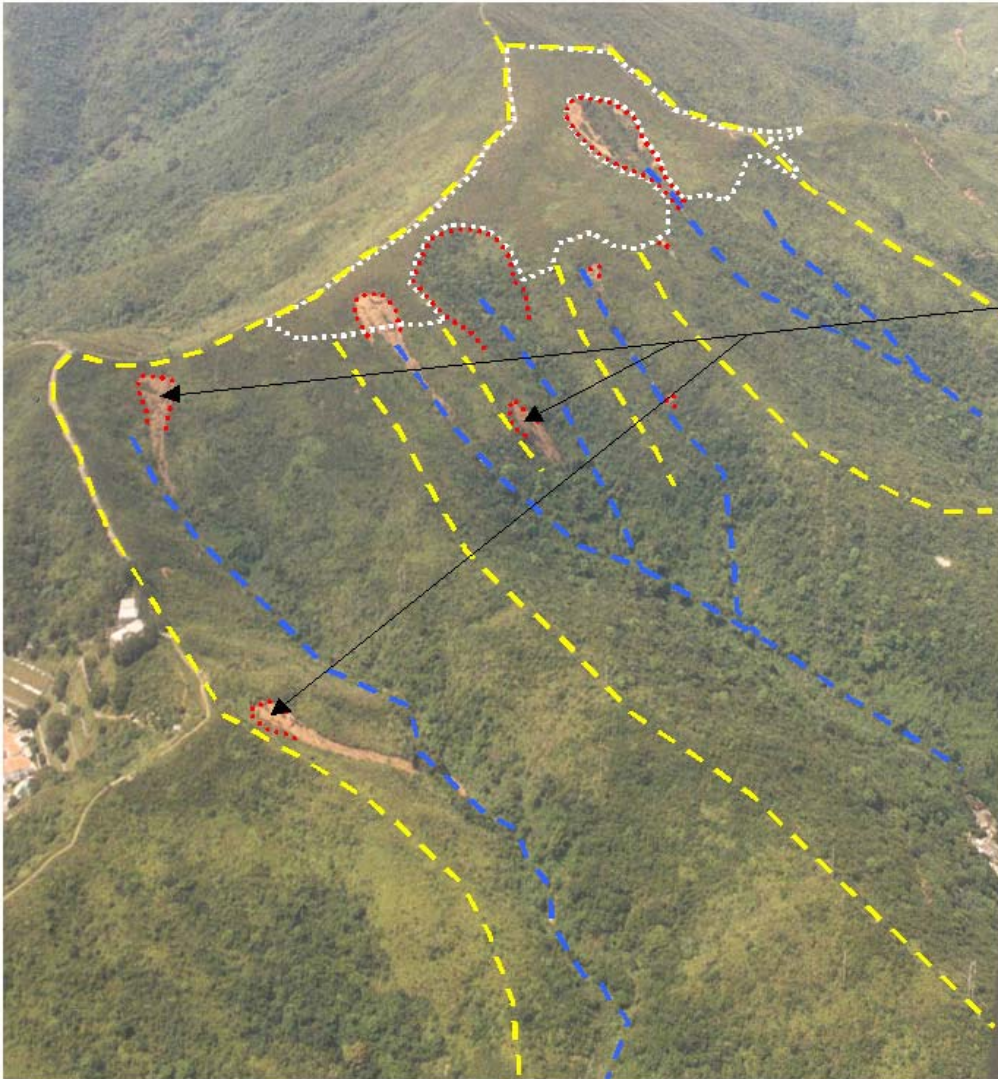
**Location:** At the boundary between the upper and lower landform assemblage, generally directly above the head of incising drainage lines.

**Description:** Generally large scale (~2 m to 10 m deep) within the deeply weathered saprolite forming the upper landform. Often retrogressive, resulting in multiple phases of landsliding.

**Typical Size:** ~20 m to 80 m wide.

Figure G2 – Geomorphological Setting of Type I Landslide (Deep Seated Multiple)





### **Type II Landslide**

**Location:** At the head and flanks of incised valleys, generally located just below ridge lines within shallow hollows at the head of minor often poorly defined drainage lines. Typically located on the zero curvature line of a plan profile map.

**Description:** Shallow translational slide (~0.5 m to 2 m deep) generally along the colluvium/saprolite interface. Typically such landslides will occur episodically at the same location.

**Typical Size:** ~5 m to 15 m wide

Figure G3 – Geomorphological Setting of Type II Landslide

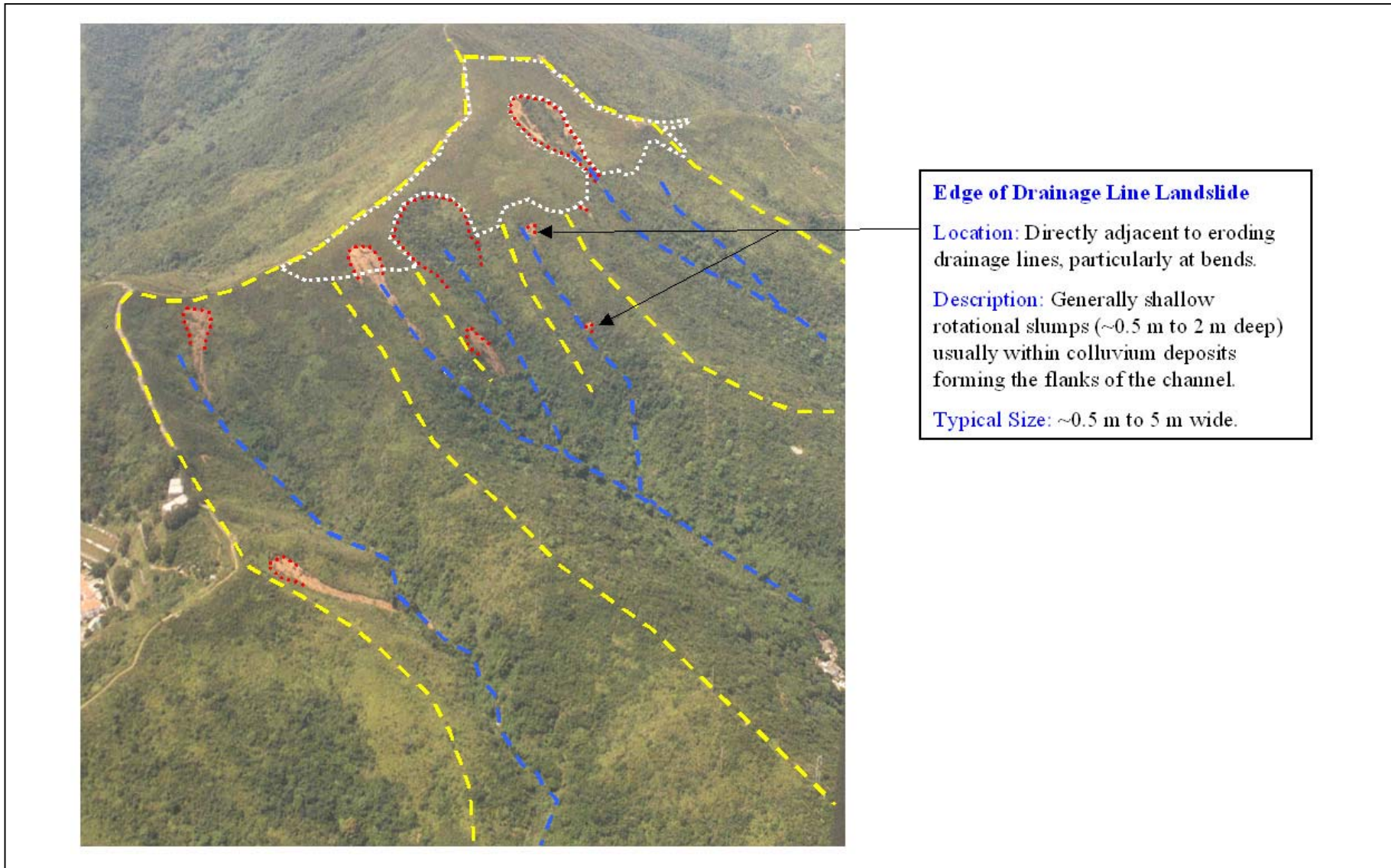


Figure G4 – Geomorphological Setting of an Edge of Drainage Line Landslide



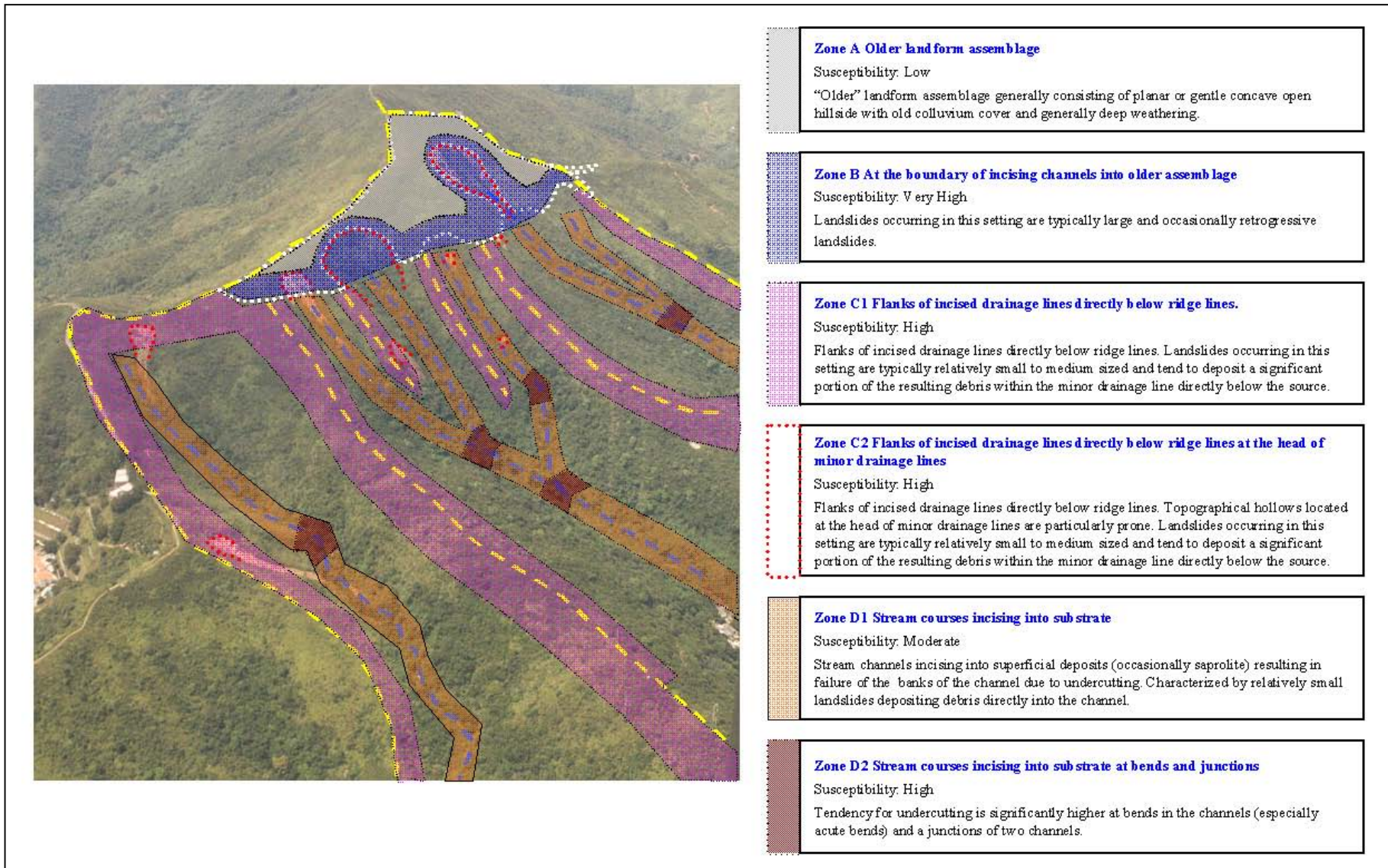


Figure G5 – Preliminary Hazard Assessment Based on Geomorphological Landslide Models

## GEO PUBLICATIONS AND ORDERING INFORMATION

### 土力工程處刊物及訂購資料

A selected list of major GEO publications is given in the next page. An up-to-date full list of GEO publications can be found at the CEDD Website <http://www.cedd.gov.hk> on the Internet under "Publications". Abstracts for the documents can also be found at the same website. Technical Guidance Notes are published on the CEDD Website from time to time to provide updates to GEO publications prior to their next revision.

**Copies of GEO publications (except maps and other publications which are free of charge) can be purchased either by:**

writing to

Publications Sales Section,  
Information Services Department,  
Room 402, 4th Floor, Murray Building,  
Garden Road, Central, Hong Kong.  
Fax: (852) 2598 7482

or

- Calling the Publications Sales Section of Information Services Department (ISD) at (852) 2537 1910
- Visiting the online Government Bookstore at <http://bookstore.esdlife.com>
- Downloading the order form from the ISD website at <http://www.isd.gov.hk> and submit the order online or by fax to (852) 2523 7195
- Placing order with ISD by e-mail at [puborder@isd.gov.hk](mailto:puborder@isd.gov.hk)

1:100 000, 1:20 000 and 1:5 000 maps can be purchased from:

Map Publications Centre/HK,  
Survey & Mapping Office, Lands Department,  
23th Floor, North Point Government Offices,  
333 Java Road, North Point, Hong Kong.  
Tel: 2231 3187  
Fax: (852) 2116 0774

**Requests for copies of Geological Survey Sheet Reports, publications and maps which are free of charge should be sent to:**

For Geological Survey Sheet Reports and maps which are free of charge:

Chief Geotechnical Engineer/Planning,  
(Attn: Hong Kong Geological Survey Section)  
Geotechnical Engineering Office,  
Civil Engineering and Development Department,  
Civil Engineering and Development Building,  
101 Princess Margaret Road,  
Homantin, Kowloon, Hong Kong.  
Tel: (852) 2762 5380  
Fax: (852) 2714 0247  
E-mail: [jsewell@cedd.gov.hk](mailto:jsewell@cedd.gov.hk)

For other publications which are free of charge:

Chief Geotechnical Engineer/Standards and Testing,  
Geotechnical Engineering Office,  
Civil Engineering and Development Department,  
Civil Engineering and Development Building,  
101 Princess Margaret Road,  
Homantin, Kowloon, Hong Kong.  
Tel: (852) 2762 5346  
Fax: (852) 2714 0275  
E-mail: [wmcheung@cedd.gov.hk](mailto:wmcheung@cedd.gov.hk)

部份土力工程處的主要刊物目錄刊載於下頁。而詳盡及最新的土力工程處刊物目錄，則登載於土木工程拓展署的互聯網網頁 <http://www.cedd.gov.hk> 的“刊物”版面之內。刊物的摘要及更新刊物內容的工程技術指引，亦可在這個網址找到。

**讀者可採用以下方法購買土力工程處刊物(地質圖及免費刊物除外):**

書面訂購

香港中環花園道  
美利大廈4樓402室  
政府新聞處  
刊物銷售組  
傳真: (852) 2598 7482

或

- 致電政府新聞處刊物銷售小組訂購 (電話: (852) 2537 1910)
- 進入網上「政府書店」選購，網址為 <http://bookstore.esdlife.com>
- 透過政府新聞處的網站 (<http://www.isd.gov.hk>) 於網上遞交訂購表格，或將表格傳真至刊物銷售小組 (傳真: (852) 2523 7195)
- 以電郵方式訂購 (電郵地址: [puborder@isd.gov.hk](mailto:puborder@isd.gov.hk))

讀者可於下列地點購買1:100 000, 1:20 000及1:5 000地質圖:

香港北角渣華道333號  
北角政府合署23樓  
地政總署測繪處  
電話: 2231 3187  
傳真: (852) 2116 0774

**如欲索取地質調查報告、其他免費刊物及地質圖，請致函:**

地質調查報告及地質圖:

香港九龍何文田公主道101號  
土木工程拓展署大樓  
土木工程拓展署  
土力工程處  
規劃部總土力工程師  
(請交:香港地質調查組)  
電話: (852) 2762 5380  
傳真: (852) 2714 0247  
電子郵件: [jsewell@cedd.gov.hk](mailto:jsewell@cedd.gov.hk)

其他免費刊物:

香港九龍何文田公主道101號  
土木工程拓展署大樓  
土木工程拓展署  
土力工程處  
標準及測試部總土力工程師  
電話: (852) 2762 5346  
傳真: (852) 2714 0275  
電子郵件: [wmcheung@cedd.gov.hk](mailto:wmcheung@cedd.gov.hk)

## **MAJOR GEOTECHNICAL ENGINEERING OFFICE PUBLICATIONS**

### **土力工程處之主要刊物**

#### **GEOTECHNICAL MANUALS**

Geotechnical Manual for Slopes, 2nd Edition (1984), 300 p. (English Version), (Reprinted, 2000).

斜坡岩土工程手冊(1998)，308頁(1984年英文版的中文譯本)。

Highway Slope Manual (2000), 114 p.

#### **GEOGUIDES**

Geoguide 1 Guide to Retaining Wall Design, 2nd Edition (1993), 258 p. (Reprinted, 2000).

Geoguide 2 Guide to Site Investigation (1987), 359 p. (Reprinted, 2000).

Geoguide 3 Guide to Rock and Soil Descriptions (1988), 186 p. (Reprinted, 2000).

Geoguide 4 Guide to Cavern Engineering (1992), 148 p. (Reprinted, 1998).

Geoguide 5 Guide to Slope Maintenance, 3rd Edition (2003), 132 p. (English Version).

岩土指南第五冊 斜坡維修指南，第三版(2003)，120頁(中文版)。

Geoguide 6 Guide to Reinforced Fill Structure and Slope Design (2002), 236 p.

#### **GEOSPECS**

Geospec 1 Model Specification for Prestressed Ground Anchors, 2nd Edition (1989), 164 p. (Reprinted, 1997).

Geospec 3 Model Specification for Soil Testing (2001), 340 p.

#### **GEO PUBLICATIONS**

GCO Publication No. 1/90 Review of Design Methods for Excavations (1990), 187 p. (Reprinted, 2002).

GEO Publication No. 1/93 Review of Granular and Geotextile Filters (1993), 141 p.

GEO Publication No. 1/2000 Technical Guidelines on Landscape Treatment and Bio-engineering for Man-made Slopes and Retaining Walls (2000), 146 p.

GEO Publication No. 1/2006 Foundation Design and Construction (2006), 376 p.

#### **GEOLOGICAL PUBLICATIONS**

The Quaternary Geology of Hong Kong, by J.A. Fyfe, R. Shaw, S.D.G. Campbell, K.W. Lai & P.A. Kirk (2000), 210 p. plus 6 maps.

The Pre-Quaternary Geology of Hong Kong, by R.J. Sewell, S.D.G. Campbell, C.J.N. Fletcher, K.W. Lai & P.A. Kirk (2000), 181 p. plus 4 maps.

#### **TECHNICAL GUIDANCE NOTES**

TGN 1 Technical Guidance Documents