

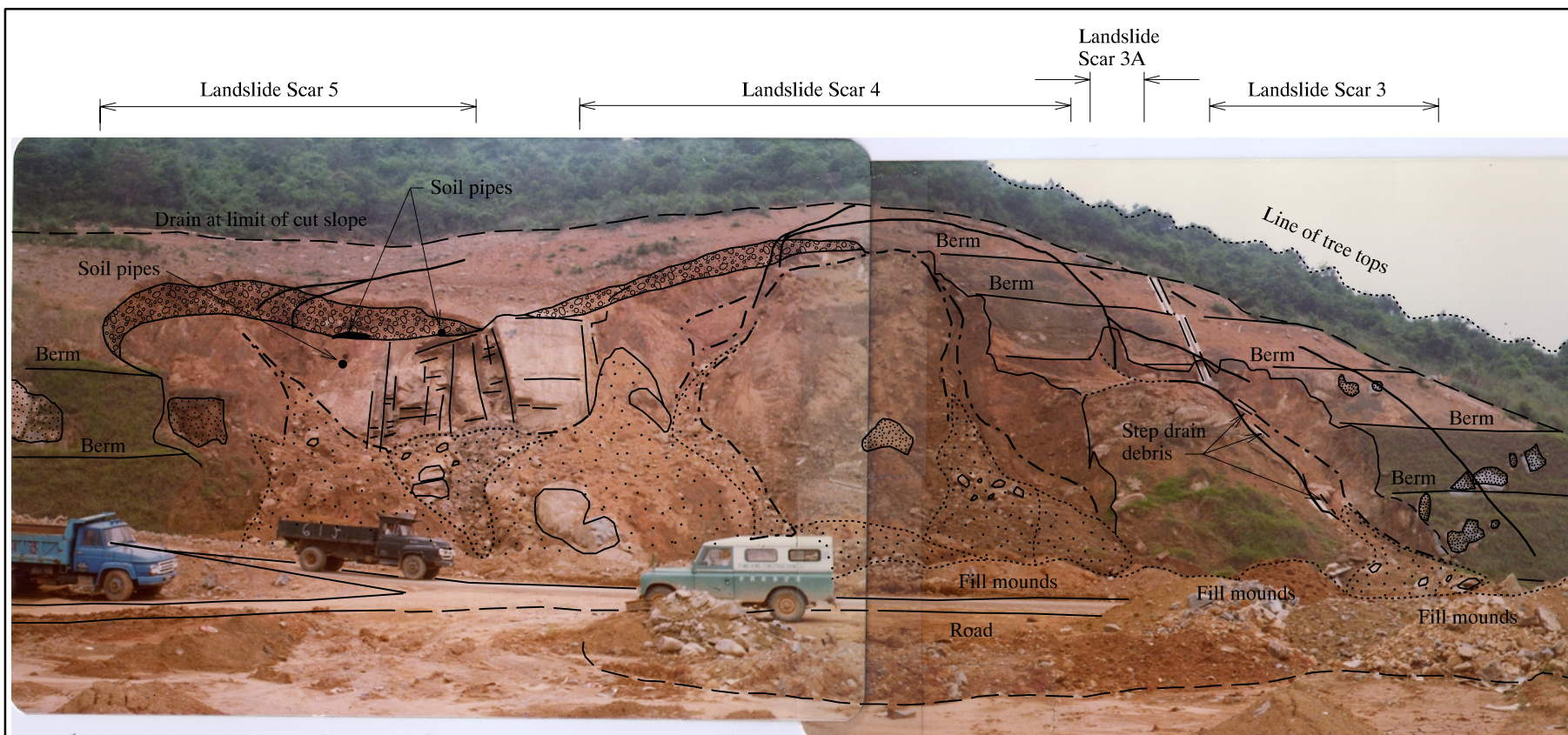
LIST OF PLATES

Plate No.		Page No.
1	Oblique Aerial Photograph of the Site (Taken on 4 July 1997)	90
2	Oblique View of the Cut Slope after the First Reported Failure in June 1978 (Taken in October 1979 by Maunsell Consultants Asia)	91
3	Oblique View of the Cut Slope During Construction (Taken on 3 March 1978 by Binnie & Partners H.K.)	92
4	Oblique Aerial View of Lai Ping Road Landslide (Annotated to Show the Landslide Scar 1-5 and Associated Debris and Part of the Main Scarp, Taken on 4 July 1997)	93
5	Main Scarp, Vertical Displacement at this Point is 3.8 m (Taken on 26 September 1997)	94
6	Close-up of Split 4CMLC Core from Drillhole TT2A Showing an Anomalous Zone within Grade V Saprolite Interpreted as Being either an Infilled Soil Pipe or a High Permeability Shear Zone (Taken on 6 May 1998)	95



Plate 1 - Oblique Aerial Photograph of the Site (Taken on 4 July 1997)





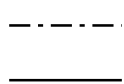
Legend :



Colluvium

Corestones

Landslide debris



Concave break in slope

Tension crack

Plate 2 - Oblique View of the Cut Slope after the First Reported Failure in June 1978  
(Taken in October 1979 by Maunsell Consultants Asia)

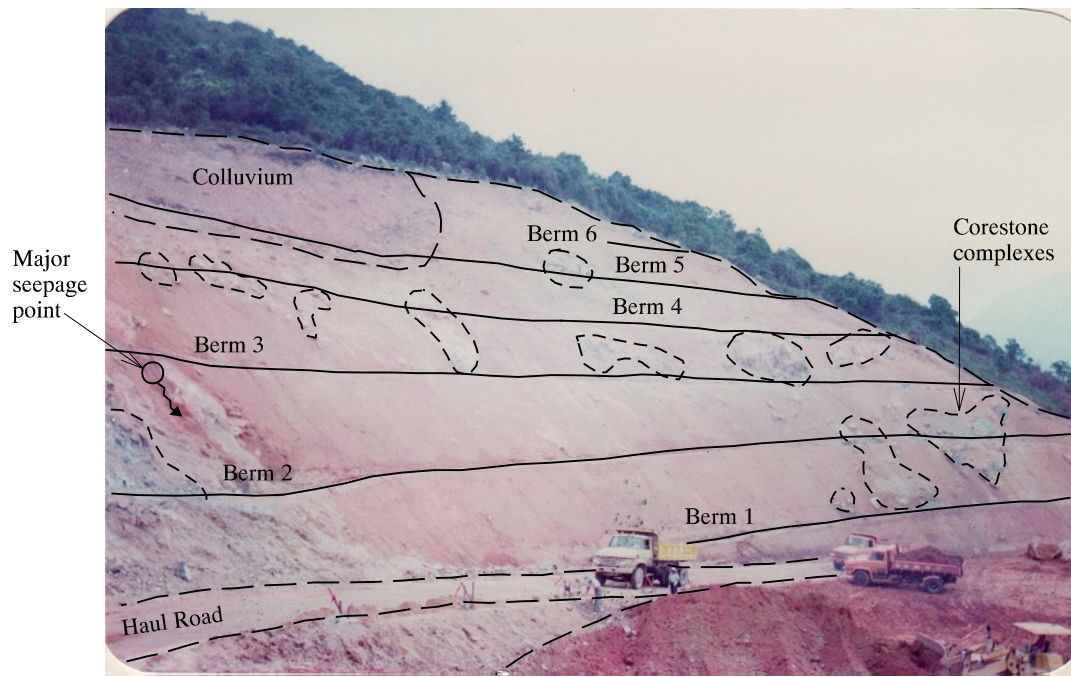


Plate 3 - Oblique View of the Cut Slope During Construction  
(Taken on 3 March 1978 by Binnie & Partners H.K.)





Plate 4 - Oblique Aerial View of Lai Ping Road Landslide (Annotated to Show the Landslide Scars 1-5 and Associated Debris and Part of the Main Scarp, Taken on 4 July 1997)





Plate 5 - Main Scarp, Vertical Displacement at this Point is 3.8 m  
(Taken on 26 September 1997)



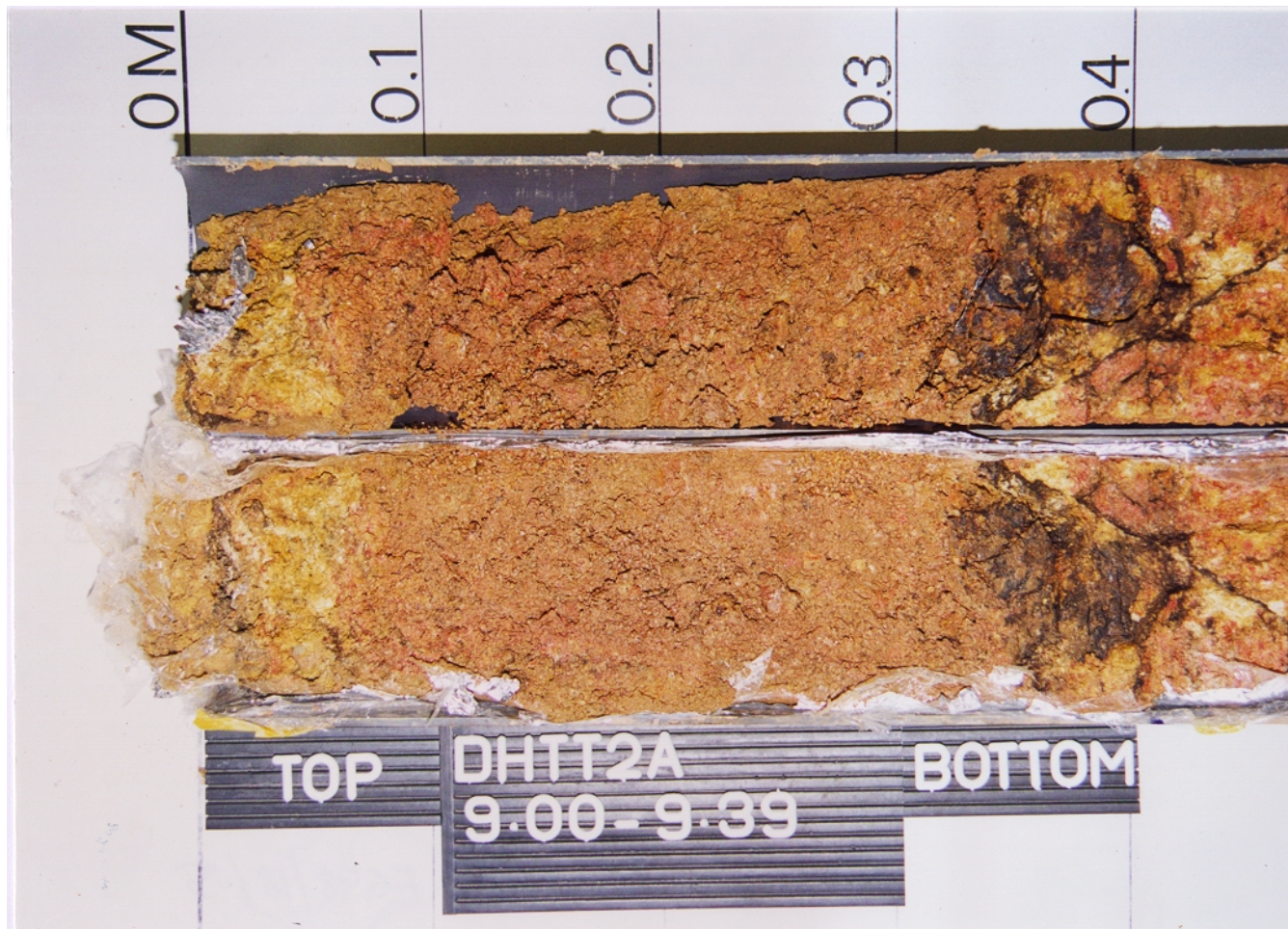


Plate 6 - Close-up of Split 4CMLC Core from Drillhole TT2A Showing an Anomalous Zone within Grade V Saprolite Interpreted as Being either an Infilled Soil Pipe or a High Permeability Shear Zone (Taken on 6 May 1998)