

LIST OF PLATES

Plate No.		Page No.
3.1	Masonry Retaining Wall at Tung Lung Fort	102
3.2	400 Year Old 'Box-bonded' Masonry Wall in HUASHAN, China	102
3.3	Tied Face Retaining Wall at Caine Road J/o Castle Road	103
3.4	Tied Face Wall Used as Foundation Wall	103
3.5	Stone Rubble Retaining Wall without Rear Blocks	104
3.6	Tied Stone Rubble Retaining Walls	104
3.7	Recent Masonry Retaining Walls	105
3.8	Rough-picked Polygonal Wall	105
4.1	Typical Example of Stone Rubble Retaining Walls Reaching the Limiting Point of Stability, Yorkshire Region (after Jones 1979)	106
4.2	Stone Rubble Retaining Wall Failures in Yorkshire Region, U.K. (after Jones 1979)	106
7.1	Seismic Probing Equipment - the Inducers	107
7.2	Seismic Probing Equipment - the Timer	107
7.3	Weephole Probe - Rods and End Pieces	108
7.4	Electric Coring Equipment (I)	109
7.5	Electric Coring Equipment (II)	109
7.6	Disturbance to Old Masonry Retaining Walls due to Drilling - Reactivation of Cracks	110
7.7	Disturbance to Old Masonry Retaining Walls due to Drilling - Dislodging of Stone Blocks	110
7.8	Example of Crack Origin Diagnosis - Retaining Wall at Hok Sze Terrace (I)	111

Plate No.		Page No.
7.9	Example of Crack Origin Diagnosis - Retaining Wall at Hok Sze Terrace (II)	111
8.1	Chinese Banyan (Ficus Microcarpa) - Characteristic Aerial Roots	112
8.2	Chinese Banyan - Surface Network of Ramifying Roots	112
8.3	Displacement of Stone Blocks due to Growth of Trees on Masonry Walls (I)	113
8.4	Displacement of Stone Blocks due to Growth of Trees on Masonry Walls (II)	113

Negative No. R/W 81.10.17

Plate 3.1 -  
Masonry Retaining Wall at  
Tung Lung Fort. Collapsed section  
exposing the structure of the wall.



Plate 3.2 - 400 Year Old 'Box-bonded' Masonry Wall in HUASHAN, China





Negative No. R/W 81.20.00

Plate 3.3 - Tied Face Retaining Wall at Caine Road J/o Castle Road



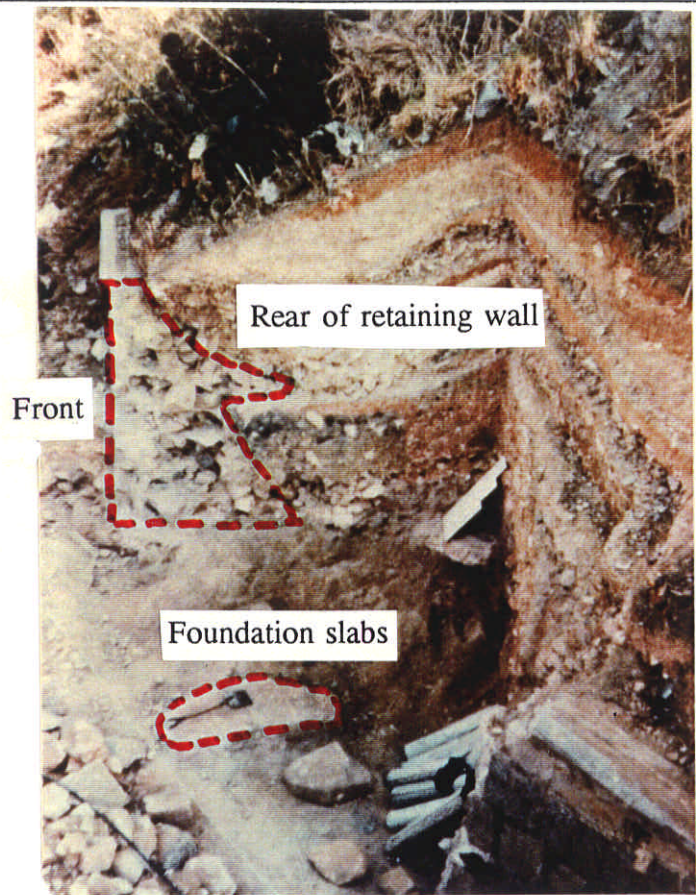
Negative No. R/W 81.20.05

Plate 3.4 -  
Tied Face Wall Used as  
Foundation Wall



Negative No. 201514

Plate 3.5 -  
Stone Rubble Retaining Wall  
without Rear Blocks



Negative No. 201807

Plate 3.6 - Tied Stone Rubble Retaining Walls





Negative No. R/W 81.06.8A

Plate 3.7 - Recent Masonry Retaining Walls



Negative No. 201805

Plate 3.8 - Rough-picked Polygonal Wall





Negative No. R/W 81.19.22

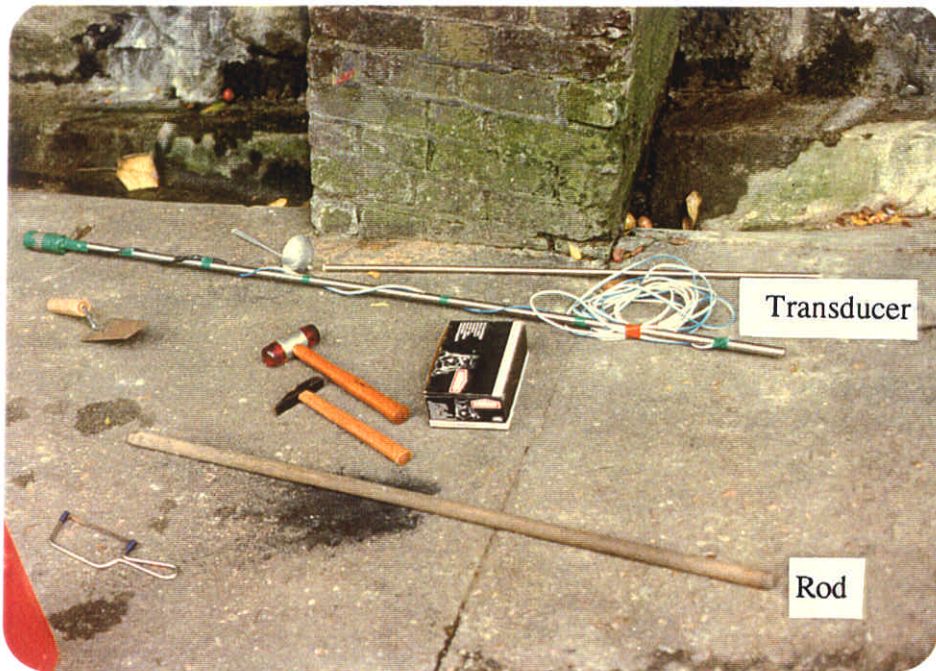
Plate 4.1 - Typical Example of Stone Rubble Retaining Walls Reaching the Limiting Point of Stability, Yorkshire Region (after Jones 1979)



Negative No. R/W 81.19.18

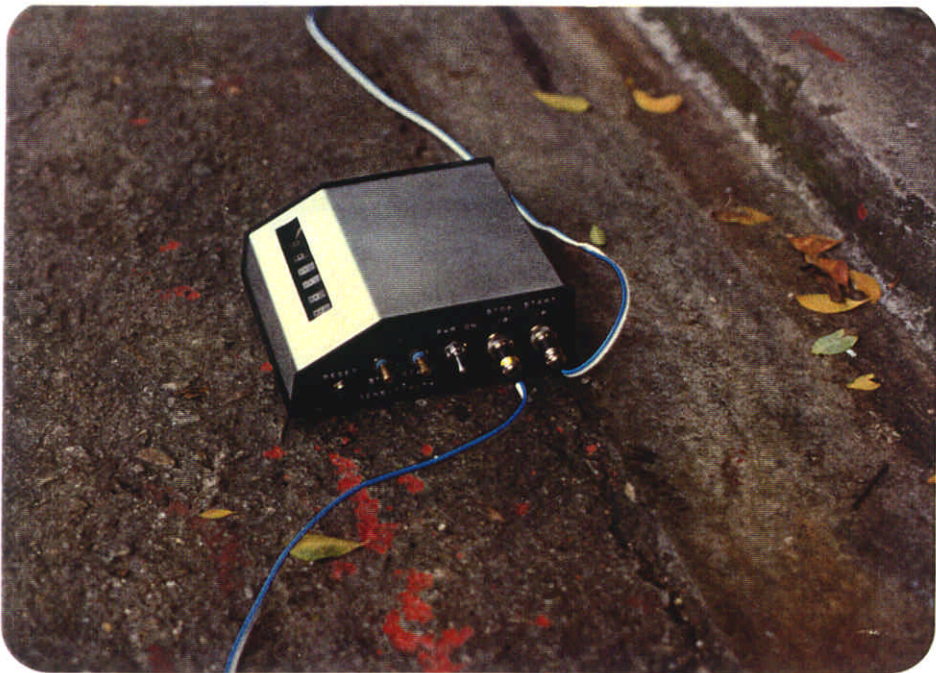
Plate 4.2 - Stone Rubble Retaining Wall Failures in Yorkshire Region, U.K. (after Jones 1979)





Negative No. R/W 81.13.2

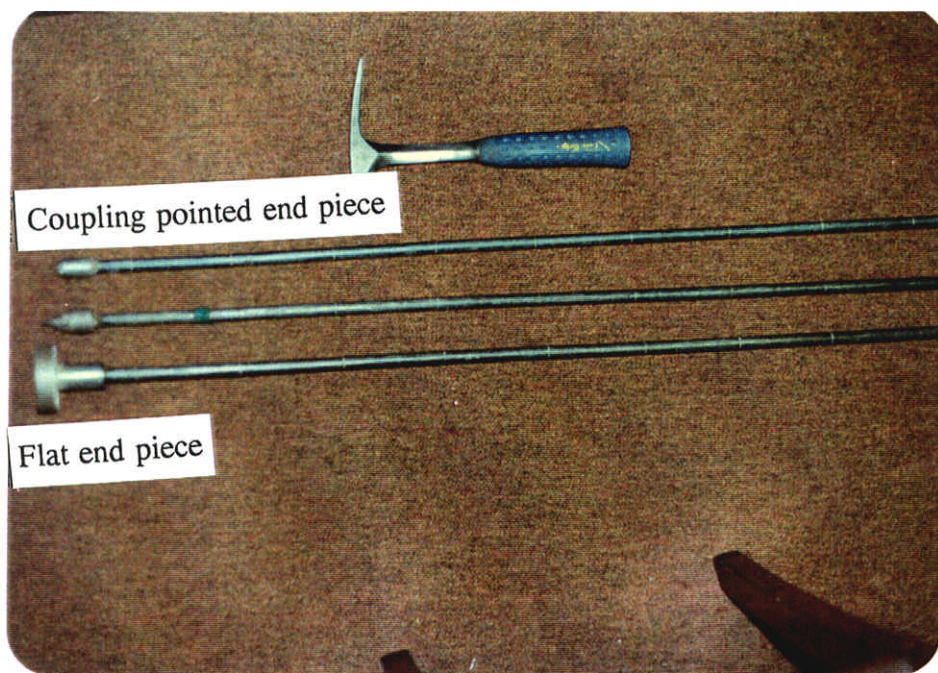
Plate 7.1 - Seismic Probing Equipment - the Inducers



Negative No. R/W 81.13.5

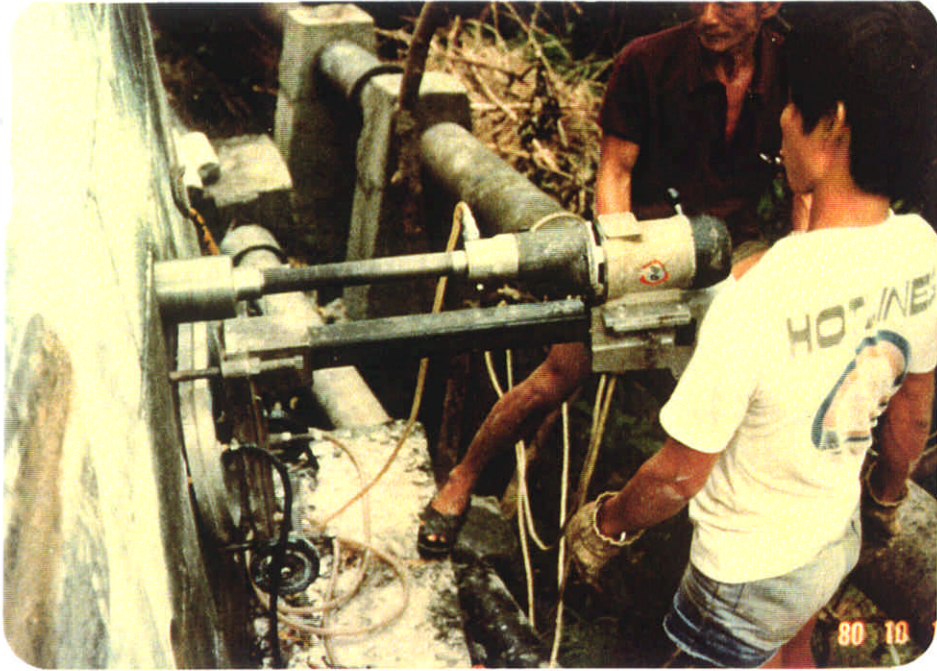
Plate 7.2 - Seismic Probing Equipment - the Timer





Negative No. R/W 81.23.10

Plate 7.3 - Weephole Probe - Rods and End Pieces



Negative No. R/W 81.09.06

Plate 7.4 - Electric Coring Equipment (I)



Negative No. R/W 81.13.07

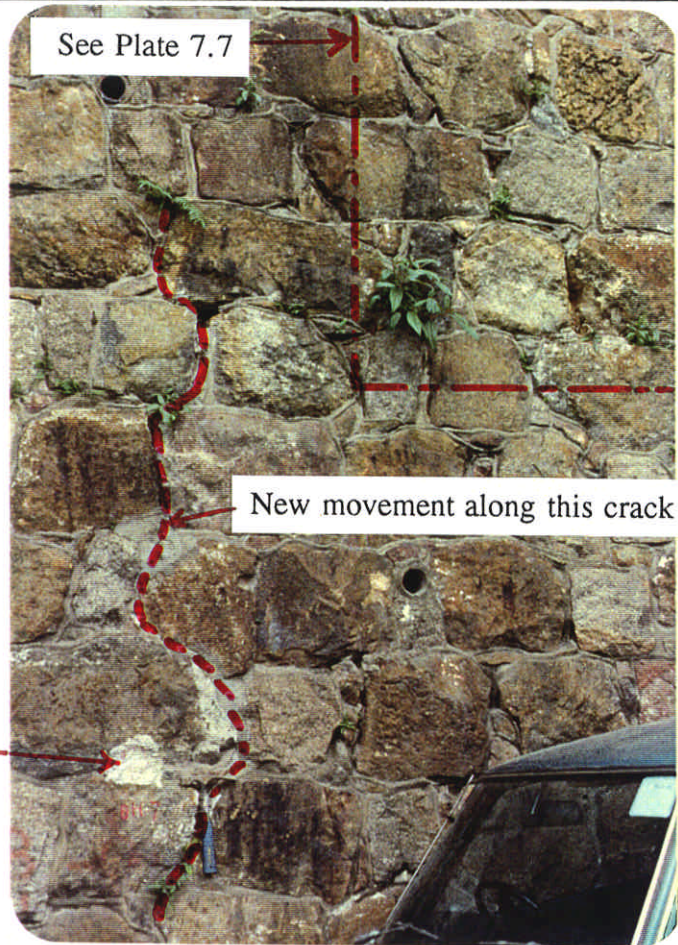
Plate 7.5 - Electric Coring Equipment (II)



Negative No. R/W 81.23.3

Plate 7.6 -  
Disturbance to Old Masonry  
Retaining Walls due to Drilling -  
Reactivation of Cracks

Backfilled drill hole



Negative No. R/W 81.23.4

Plate 7.7 - Disturbance to Old Masonry Retaining Walls due to Drilling -  
Dislodging of Stone Blocks





Negative No. R/W 81.07.05

Plate 7.8 - Example of Crack Origin Diagnosis - Retaining Wall at Hok Size Terrace (I)



Negative No. R/W 81.07.01

Plate 7.9 -  
Example of Crack Origin Diagnosis -  
Retaining Wall  
at Hok Size Terrace (II)





Negative No. R/W 81.21.22

Plate 8.1 - Chinese Banyan (*Ficus Microcarpa*) - Characteristic Aerial Roots



Negative No. R/W 81.21.17

Plate 8.2 - Chinese Banyan - Surface Network of Ramifying Roots





Negative No. R/W 81.21.19

Plate 8.3 - Displacement of Stone Blocks due to Growth of Trees on Masonry Walls (I)



Negative No. R/W 81.21.20

Plate 8.4 - Displacement of Stone Blocks due to Growth of Trees on Masonry Wall (II)