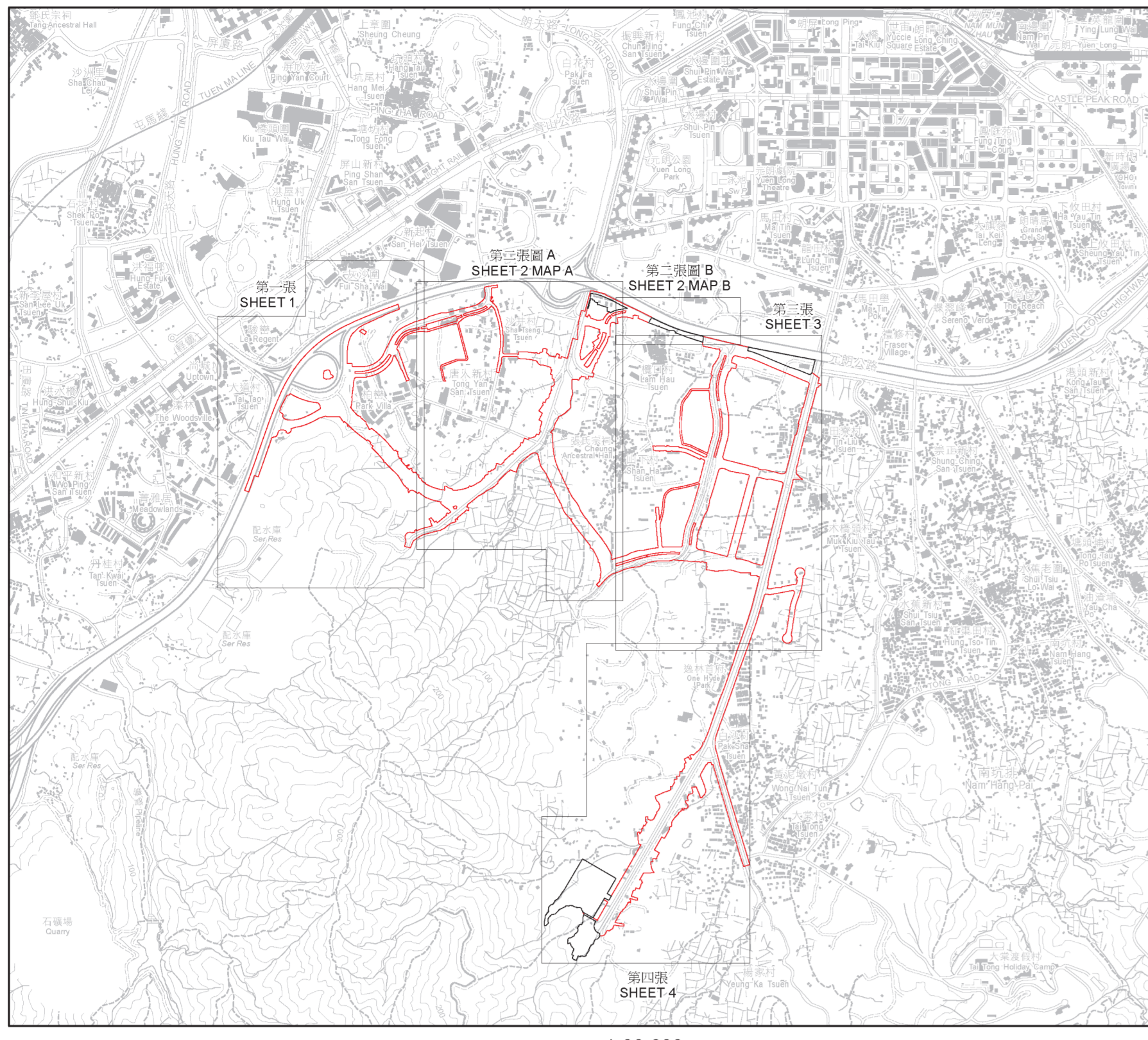


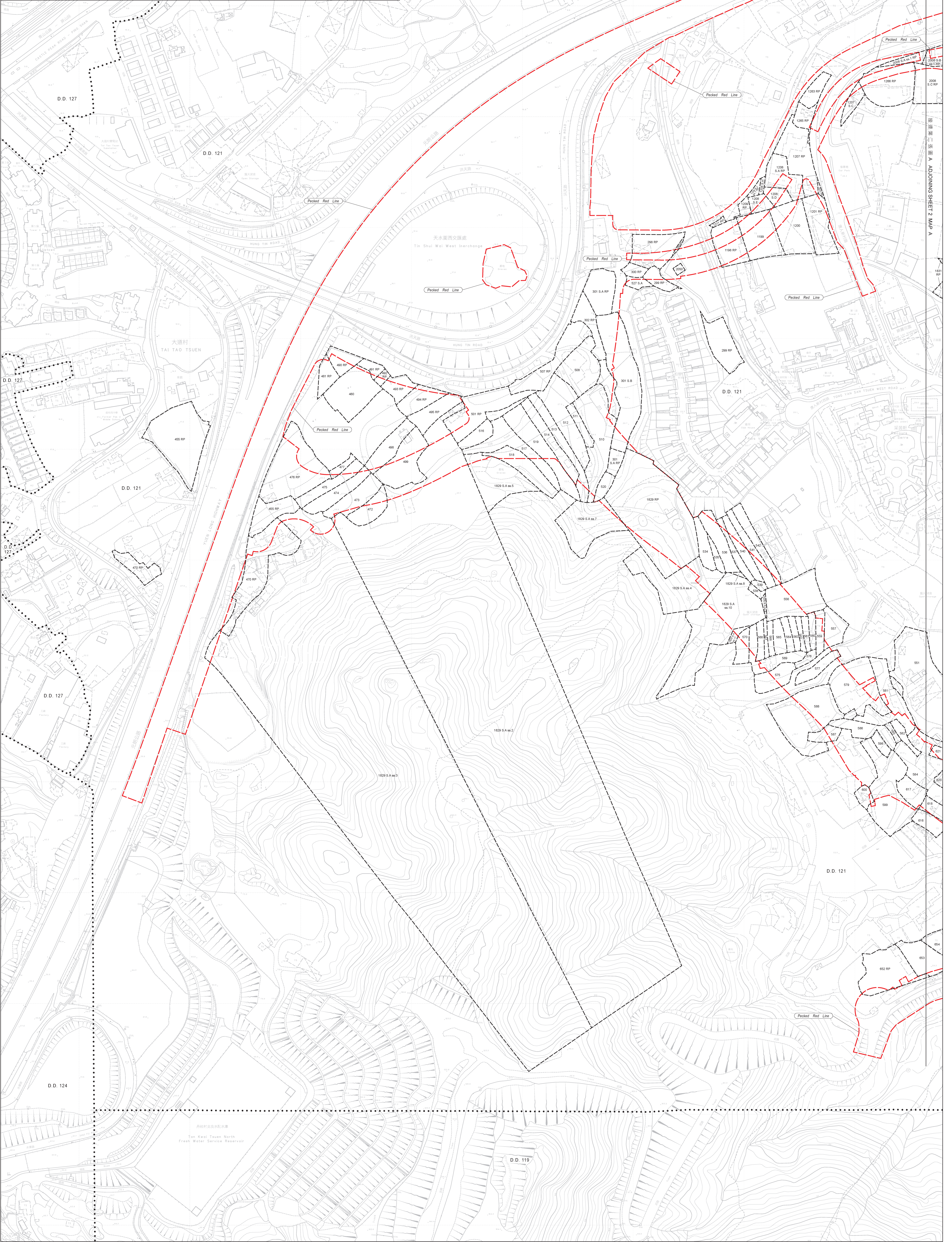
位置 LOCATION



比例 SCALE 1:20 000

圖例 LEGEND

- 施工區界限 LIMIT OF WORKS AREA
- 竣工/清拆界限 RESUMPTION / CLEARANCE LIMIT
- 預示將復用之土地 LAND TO BE RESUMED
- 地段界線 LOT BOUNDARY
- 丈量區界 DEMARCATION DISTRICT
- 餘地 REMAINING PORTION
- 分段 SECTION
- 小分段 SUBSECTION
- 丈量區界線 DEMARCATION DISTRICT BOUNDARY
- 橙色 COLOURED ORANGE
- 紅色虛線 PECKED RED LINE



說明 NOTE:
有關復用區圖則，請參閱圖則 4
FOR RESUMPTION AREA SCHEDULE, PLEASE REFER TO SHEET 4

比例尺 SCALE 1:1 000
metres 20 0 20 40 60 80 100 metres

只作識別用 FOR IDENTIFICATION PURPOSES ONLY

已簽署 Signed
(劉燕儀 Joanne LOU)
總差餉測量師/新發展區 Chief Estate Surveyor / New Development Area
日期 Date 11/05/2023

收地圖則
水污染管制(排污設備)規例(第358章,附屬法例AL)第26條
引用道路(工程、使用及補償)條例(第370章)
工務計劃項目第7827CL號(部分)及第4429DS號
元朗南第二期發展及元朗南淨水設施的排污設備工程
RESUMPTION PLAN
ROADS (WORKS, USE AND COMPENSATION) ORDINANCE (CHAPTER 370)
AS APPLIED BY SECTION 26 OF THE WATER POLLUTION CONTROL (SEWERAGE) REGULATION (CHAPTER 358, SUBSIDIARY LEGISLATION AL)
PWP ITEM NOS. 7827CL (PART) AND 4429DS
SEWERAGE WORKS UNDER YUEN LONG SOUTH DEVELOPMENT - SECOND PHASE DEVELOPMENT AND YUEN LONG SOUTH EFFLUENT POLISHING PLANT

檔案編號 File No. LD NDA/YLS/PLAN/3, LD DSO/YL/13/157/2
測量圖編號 Survey Sheet No. 6-NW-13A, 13B, 13C, 13D, 18A & 18B
參考圖編號 Reference Plan No. 60630968/GAZ/130-141 (土木工程師簽署 CEED)
圖則編號 PLAN No. YLM11066 (第一張共四張 SHEET 1 OF 4)

- 圖例**
LEGEND
- 施工區界線
LIMIT OF WORKS AREA
 - 地段界線
LOT BOUNDARY
 - 工程/重新界線
RESUMPTION / CLEARANCE LIMIT
 - 須予收回的土地
LAND TO BE RESUMED
 - 文量區界線
DEMARCATION DISTRICT BOUNDARY
 - 文量區界線
DEMARCATION DISTRICT BOUNDARY
 - 分段
SECTION
 - 小分段
SUBSECTION
 - 分段
SECTION
 - 分段
SECTION
 - 特色
COLOURED ORANGE
 - 紅色虛線
PECKED RED LINE
 - 紅色虛線
PECKED RED LINE

圖 A MAP A

圖則 1 INSET 1
不依比例 NOT TO SCALE
D.D. 120

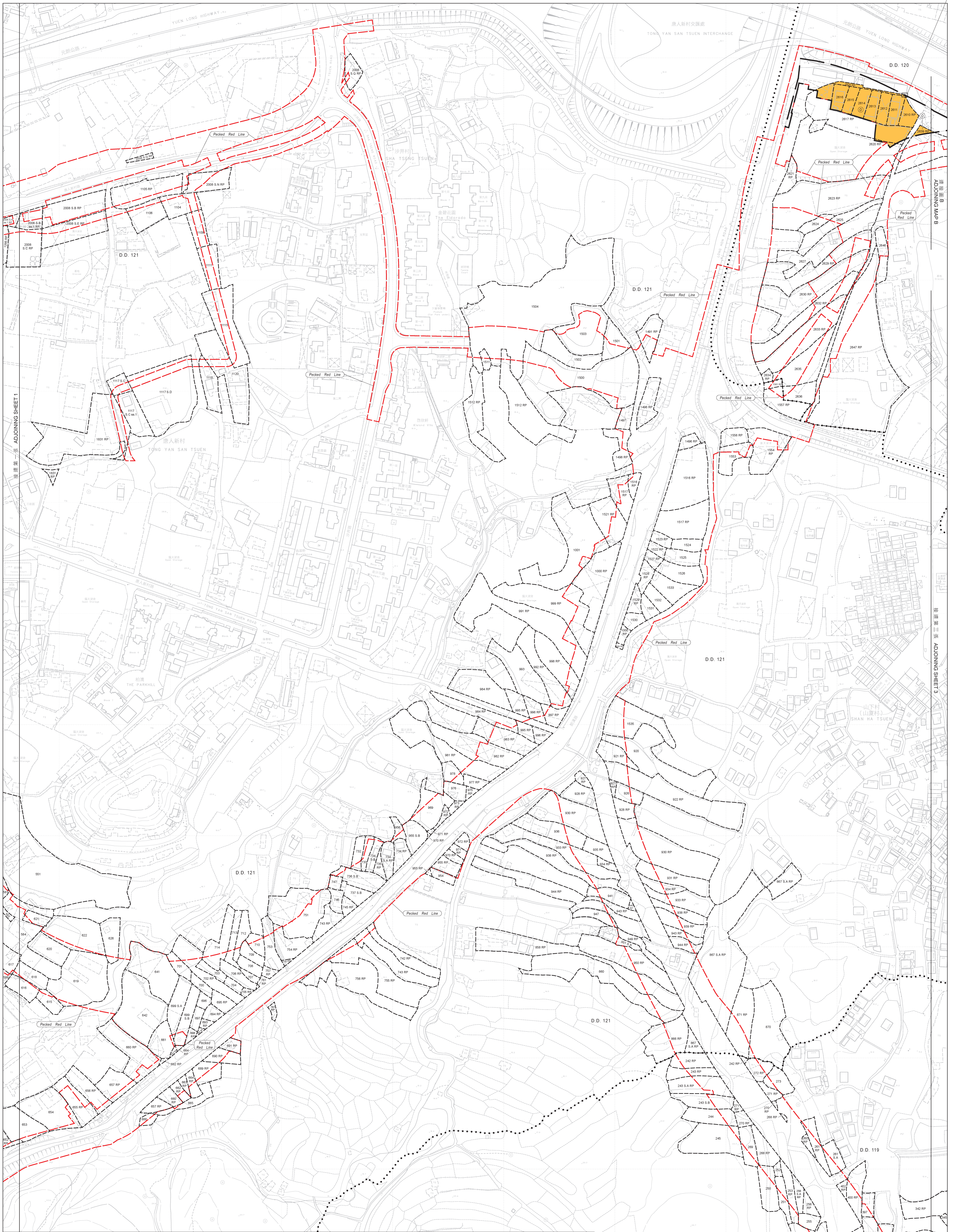
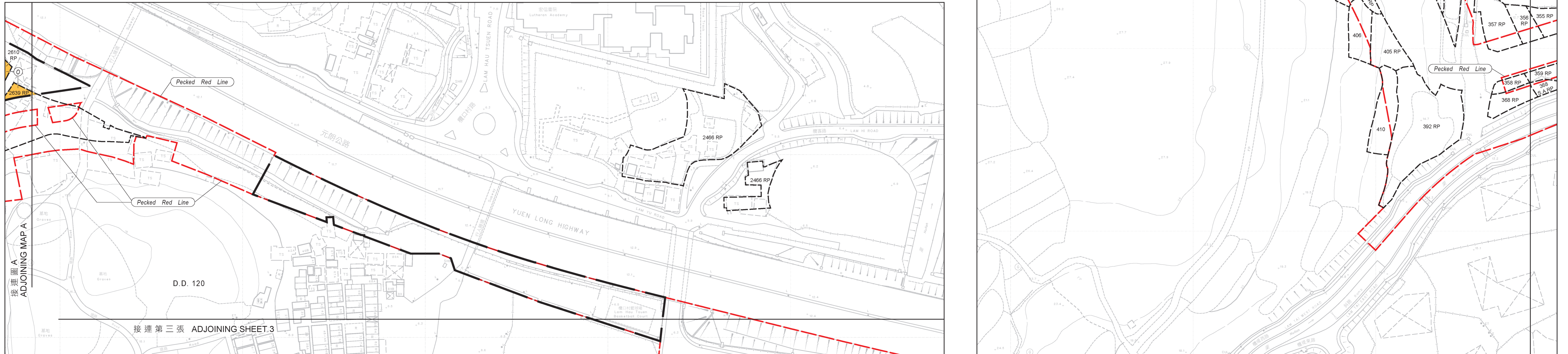


圖 B MAP B



說明
NOTE:
有關收地事宜，請參閱圖則 4
FOR RESUMPTION AREA SCHEDULE, PLEASE REFER TO SHEET 4

北極尺 SCALE 1:1 000
0 20 40 60 80 100 metres

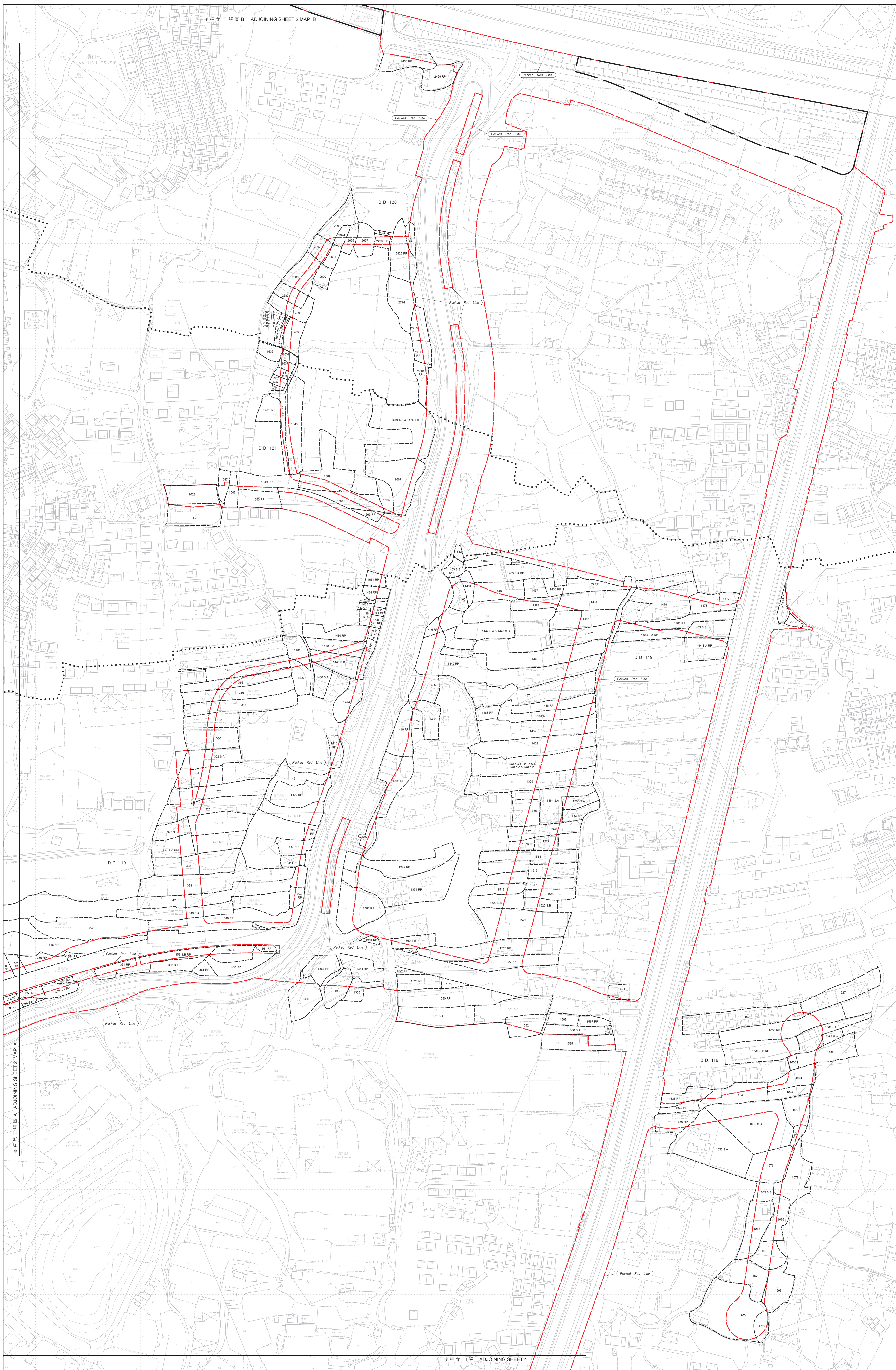
只作識別用 FOR IDENTIFICATION PURPOSES ONLY

已簽署 Signed
(劉燕儀 Joanne LOU)
總差餉測量師/新發展區 Chief Estate Surveyor / New Development Area
日期 Date 11/05/2023

收地圖則
水污染管制(排污設備)規例(第358章,附屬法例AL)第26條
引用道路(工程、使用及補償)條例(第370章)
工務計劃項目第7827CL號(部分)及第4429DS號
元朗南第二期發展及元朗南淨水設施的排污設備工程
RESUMPTION PLAN
ROADS (WORKS, USE AND COMPENSATION) ORDINANCE (CHAPTER 370)
AS APPLIED BY SECTION 26 OF THE WATER POLLUTION CONTROL (SEWERAGE) REGULATION (CHAPTER 358, SUBSIDIARY LEGISLATION AL)
PWP ITEM NOS. 7827CL (PART) AND 4429DS
SEWERAGE WORKS UNDER YUEN LONG SOUTH DEVELOPMENT - SECOND PHASE DEVELOPMENT AND YUEN LONG SOUTH EFFLUENT POLISHING PLANT

檔案編號 File No. LD NDA/YLS/PLAN/3, LD DSO/YL/13/157/2
測量圖編號 Survey Sheet No. 6-NW-13B, 13D, 14A, 14C, 18B & 19A
參考圖編號 Reference Plan No. 60630968/GAZ/130-141 (土木工程師簽署 CEED)
圖則編號 PLAN No. YLM11066 (第二張 共四張 SHEET 2 OF 4)

	施工區界線 LIMIT OF WORKS AREA		地段界線 LOT BOUNDARY	S	分段 SECTION		着色 COLOURED ORANGE
	收地/清拆界線 RESUMPTION / CLEARANCE LIMIT	D.D.	丈量前界 DEMARCATON DISTRICT	44	小分段 SUBSECTION		藍色虛線 PECKED RED LINE
	待予收回的土 LAND TO BE RESUMED	RP	剩餘 REMAINING PORTION	丈量前界 DEMARCATON DISTRICT BOUNDARY		



比例尺 SCALE 1:1,000
 1:1,000
 metres 20 0 20 40 60 80 100 metres

FOR RESUMPTION AREA SCHEDULE, PLEASE REFER TO SHEET 4

只作識別用 FOR IDENTIFICATION PURPOSES ONLY

已簽署 Signed
 (劉燕儀 Joanne LOU)
 總差餉測量師/新發展區 Chief Estate Surveyor / New Development Area
 日期 Date 11/05/2023

收地圖則
 水污染管制(排污設備)規例(第358章,附屬法例AL)第26條
 引用道路(工程、使用及補償)條例(第370章)
 工務計劃項目第7827CL號(部分)及第4429DS號
 元朗南第二期發展及元朗南淨水設施的排污設備工程
RESUMPTION PLAN
 ROADS (WORKS, USE AND COMPENSATION) ORDINANCE (CHAPTER 370)
 AS APPLIED BY SECTION 26 OF THE WATER POLLUTION CONTROL (SEWERAGE) REGULATION (CHAPTER 358, SUBSIDIARY LEGISLATION AL)
 PWP ITEM NOS. 7827CL (PART) AND 4429DS
 SEWERAGE WORKS UNDER YUEN LONG SOUTH DEVELOPMENT - SECOND PHASE DEVELOPMENT AND YUEN LONG SOUTH EFFLUENT POLISHING PLANT

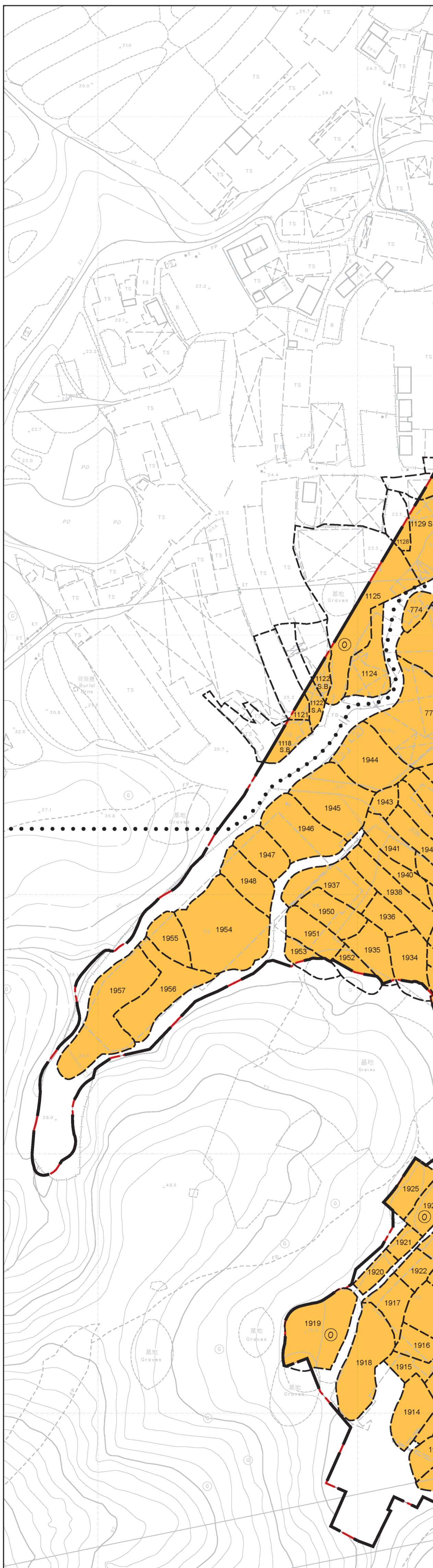
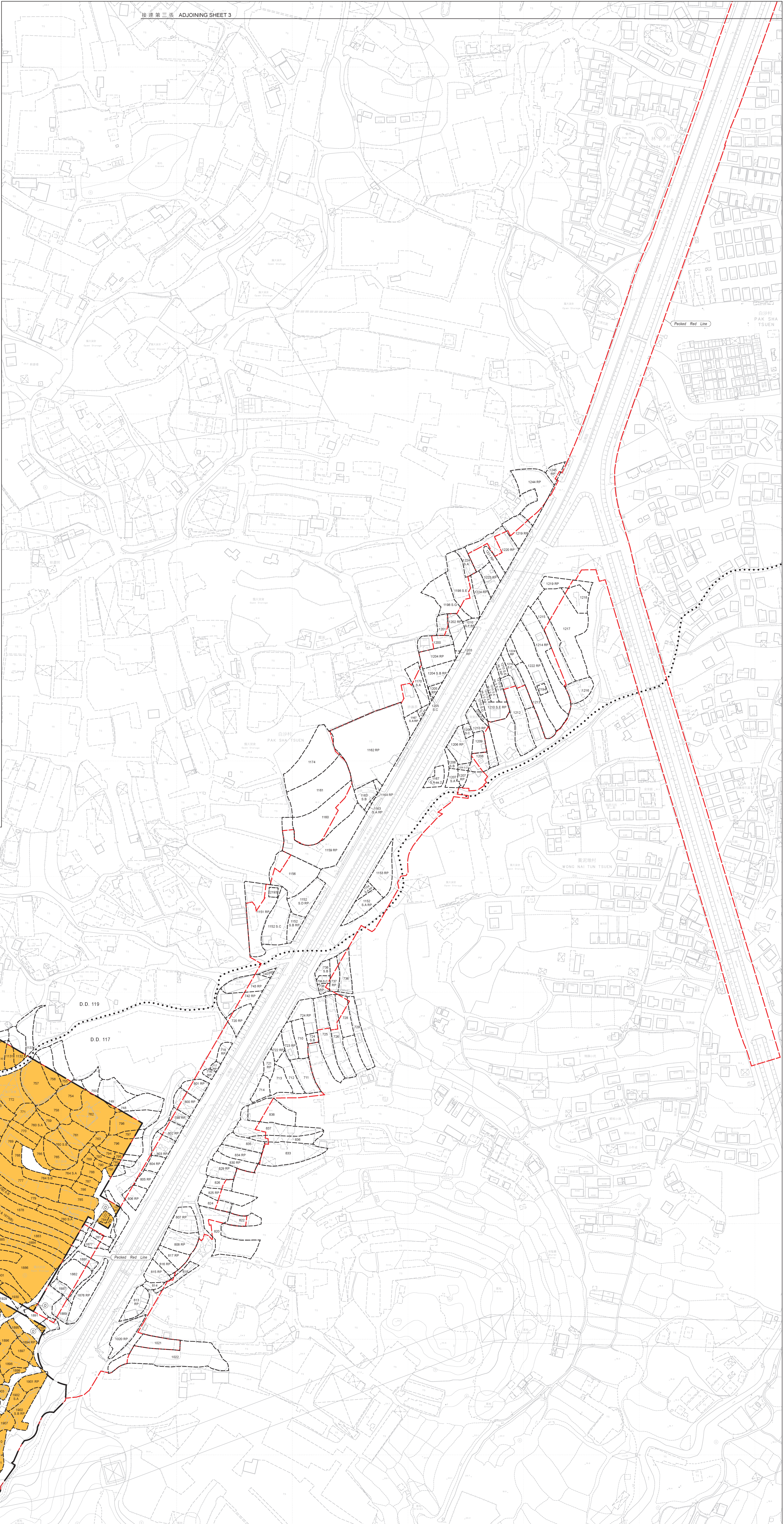
檔案編號 File No. LD NDA/YLS/PLAN/3, LD DSO/YL/13/157/2
 測量圖編號 Survey Sheet No. 6-NW-14C, 14D, 19A, 19B, 19C & 19D
 參考圖編號 Reference Plan No. 60630968/GAZ/130-141 (土木工程師簽署 CEED)
 圖則編號 PLAN No. YLM11066 (第三張 共四張 SHEET 3 OF 4)

圖例
LEGEND

- 工務區界線
LIMIT OF WORKS AREA
- 收地/清拆界線
RESUMPTION / CLEARANCE LIMIT
- 須予收回的土地
LAND TO BE RESUMED
- 地段界線
LOT BOUNDARY
- 丈量前界線
DEMARICATION DISTRICT
- 界線
REMAINING PORTION
- 分段
SECTION
- 小分段
SUBSECTION
- 丈量前界線
DEMARICATION DISTRICT BOUNDARY
- 顏色
COLOURED ORANGE
- 藍色虛線
PECKED RED LINE

將予收回土地的面積
Area of Land to be Resumed

丈量前地段 D.D. No.	地段編號 Lot No.	平方米(約數) m ² (about)	平方呎(約數) ft ² (about)
117	746	15.4	166
117	749	15.2	164
117	753	2.7	29
117	754	4023	4330
117	755	1557	1699
117	757	754.0	8116
117	758	528.1	5693
117	759	161.8	1742
117	762 S.A	283.3	3049
117	762 S.B	283.3	3049
117	761	495.6	5327
117	762	728.8	7832
117	763	40.5	436
117	764 S.A	191.8	2078
117	764 S.B	202.3	2178
117	765	364.2	3920
117	766	242.8	2614
117	768	161.8	1742
117	769	404.7	4356
117	770	202.3	2178
117	771	242.8	2614
117	772	566.5	6086
117	773	404.7	4356
117	774	40.5	436
117	775	604.4	6512
117	776	1011.7	10860
117	777	595.9	6426
117	778	40.5	436
117	779	702.8	7562
117	780 S.A	266.1	2868
117	780 S.B	495.6	5327
117	782 RP	451.1	485
117	783	57.2	616
117	784	404.7	4356
117	785	404.7	4356
117	786	121.4	1307
117	787	121.4	1307
117	788	242.8	2614
117	789	161.8	1742
117	790	80.9	871
117	791	99.6	1072
117	792	39.5	424
117	793	121.4	1307
117	794	80.9	871
117	795	40.6	437
117	796	290.3	3119
117	797	60.9	657
117	798	376.7	4055
117	799	823.8	8818
117	1876(A)	346.9	3734
117	1876(B)	426.3	4564
117	1883	445.6	4789
117	1884	394.4	4249
117	1885	824.7	8864
117	1886	1579.2	16980
117	1887 RP	404.7	4356
117	1891	47.0	506
117	1894 RP	285.7	3078
117	1895	60.9	657
117	1896	333.8	3585
117	1897	242.8	2614
117	1898	333.3	3584
117	1899	121.4	1307
117	1901 RP	404.7	4356
117	1902 S.A	202.3	2178
117	1902 S.B RP	404.8	4357
117	1903	121.4	1307
117	1904	283.3	3049
117	1905	80.9	871
117	1906	526.1	5663
117	1907	283.3	3049
117	1908	80.9	871
117	1909	161.8	1742
117	1910	242.8	2614
117	1911	40.5	436
117	1912	202.3	2178
117	1913	202.3	2178
117	1914	283.3	3049
117	1915	121.4	1307
117	1916	161.8	1742
117	1917	121.4	1307
117	1918	607.0	6534
117	1919	599.9	6468
117	1920	121.4	1307
117	1921	80.9	871
117	1922	121.4	1307
117	1923	161.8	1742
117	1924	202.3	2178
117	1925	242.8	2614
117	1926	121.4	1307
117	1927	161.8	1742
117	1928	193.7	2087
117	1929	214.8	2301
117	1930	607.0	6534
117	1931	40.5	436
117	1932	242.8	2614
117	1934	242.8	2614
117	1935	234.7	2528
117	1936	283.3	3049
117	1937	445.2	4792
117	1938	333.8	3585
117	1939	333.8	3585
117	1940	161.8	1742
117	1941	202.3	2178
117	1942	333.8	3585
117	1943	80.9	871
117	1944	445.2	4792
117	1945	495.6	5327
117	1946	607.0	6534
117	1947	333.8	3585
117	1948	242.8	2614
117	1950	202.3	2178
117	1951	242.8	2614
117	1952	191.1	2064
117	1953	36.2	411
117	1954	971.2	10544
117	1955	202.3	2178
117	1956	364.2	3920
117	1957	849.9	9148
119	1058	25.2	271
119	1061	289	309
119	1062	84.4	908
119	1118 S.B	153.1	1648
119	1120	45.2	486
119	1122 S.A	84.5	910
119	1122 S.B	73.8	794
119	1124	323.5	3485
119	1125	625.3	6731
119	1126	506	545
119	1129 S.A	367.9	3960
119	1129 S.B	46.7	502
119	1130	115.4	1242
119	1131	110.3	1188
119	1132	84.6	908
119	1133	5.3	57
120	2009 RP	46.4	498
120	2010 RP	416.9	4468
120	2011	323.8	3485
120	2012	242.8	2614
120	2013	333.8	3585
120	2014	323.8	3485
120	2015	202.3	2178
120	2016	242.8	2614
120	2017 RP	826.1	8884
120	2020 RP	32.4	349
120	2024 RP	32.3	348
120	2025 RP	32.3	348
120	Total Area	39931.5	42898



比例尺 SCALE 1:1000
metres 20 0 20 40 60 80 100 metres

只作識別用 FOR IDENTIFICATION PURPOSES ONLY

已簽署 Signed
(劉燕儀 Joanne LOU)
總產業測量師/新發展區 Chief Estate Surveyor / New Development Area
日期 Date 11/05/2023

收地圖則
水污染管制(排污設備)規例(第358章,附屬法例AL)第26條
引用道路(工程、使用及補償)條例(第370章)
工務計劃項目第7827CL號(部分)及第4429DS號
元朗南第二期發展及元朗南淨水設施的排污設備工程
RESUMPTION PLAN
ROADS (WORKS, USE AND COMPENSATION) ORDINANCE (CHAPTER 370)
AS APPLIED BY SECTION 26 OF THE WATER POLLUTION CONTROL (SEWERAGE) REGULATION (CHAPTER 358, SUBSIDIARY LEGISLATION AL)
PWP ITEM NOS. 7827CL (PART) AND 4429DS
SEWERAGE WORKS UNDER YUEN LONG SOUTH DEVELOPMENT AND YUEN LONG SOUTH EFFLUENT POLISHING PLANT

檔案編號 File No. LD NDA/YLS/PLAN/3, LD DSO/YL/13/157/2
測量圖編號 Survey Sheet No. 6-NW-19C, 19D, 23B, 23D, 24A, 24B, 24C & 24D
參考圖編號 Reference Plan No. 60830968/GAZ/130-141 (土木工程師簽署 CEDD)
圖則編號 PLAN No. YLM11066 (第四張 共四張 SHEET 4 OF 4)